



Government of Nepal Ministry of Health and Population

SitRep

#865

Health Sector Response to COVID-19

Thursday | 23 June 2022 (09 Ashad 2079)

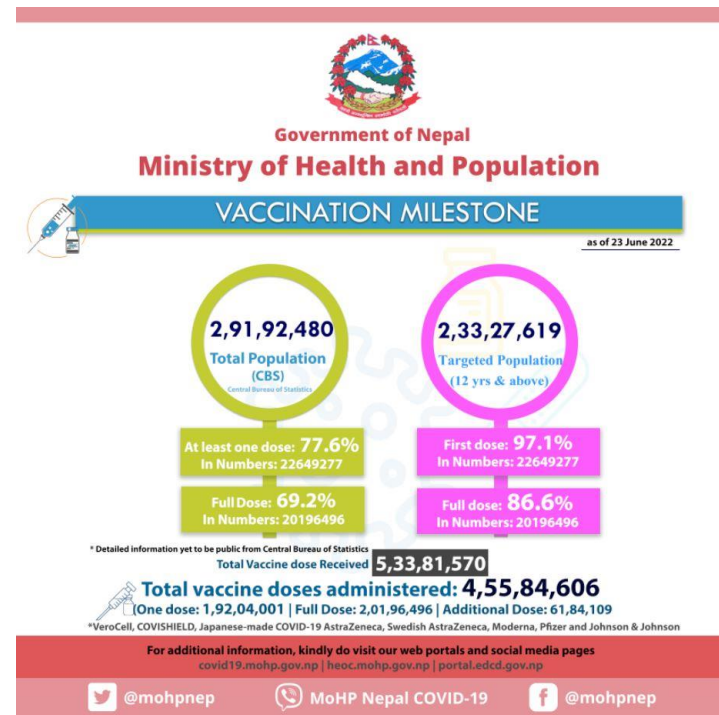
Total Test PCR Antigen 5747503 1221547	Total Positive PCR Antigen 979457 140409	Recovered 967342	Recovery Rate 98.8%	Deaths 11952	Case Fatality Rate 1.2%	People in Quarantine 0
--	--	-----------------------------------	--------------------------------------	-------------------------------	--	---

Note: The descriptive analysis is based on the data of RT-PCR only, reception of detailed line list of antigen test is in process

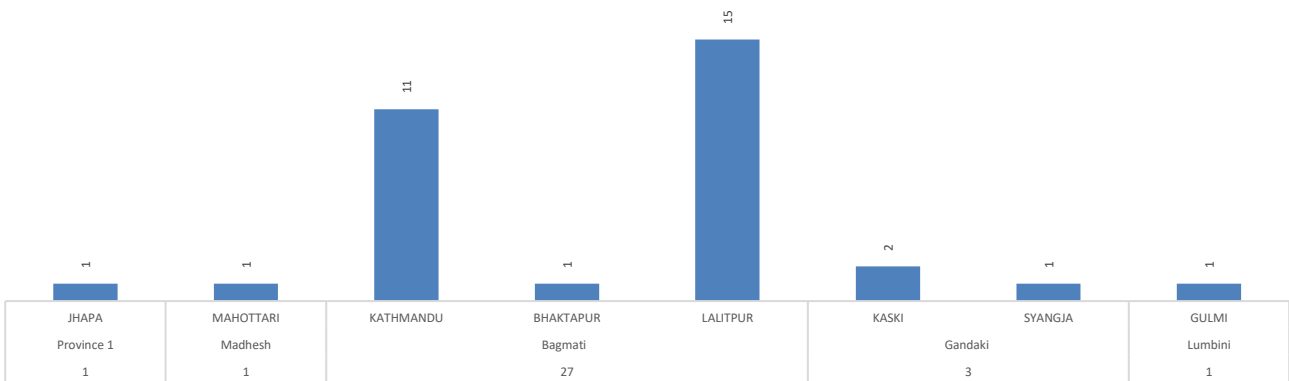
COVID-19 Updates (In Last 24 hours)

Sample Tested	2494* RT-PCR: 1234, Antigen: 1260
New Cases	49* RT-PCR: 33, Antigen: 16
Recovery/ Discharge	12
Vaccinated	85657
Deaths	0
Active Case	163

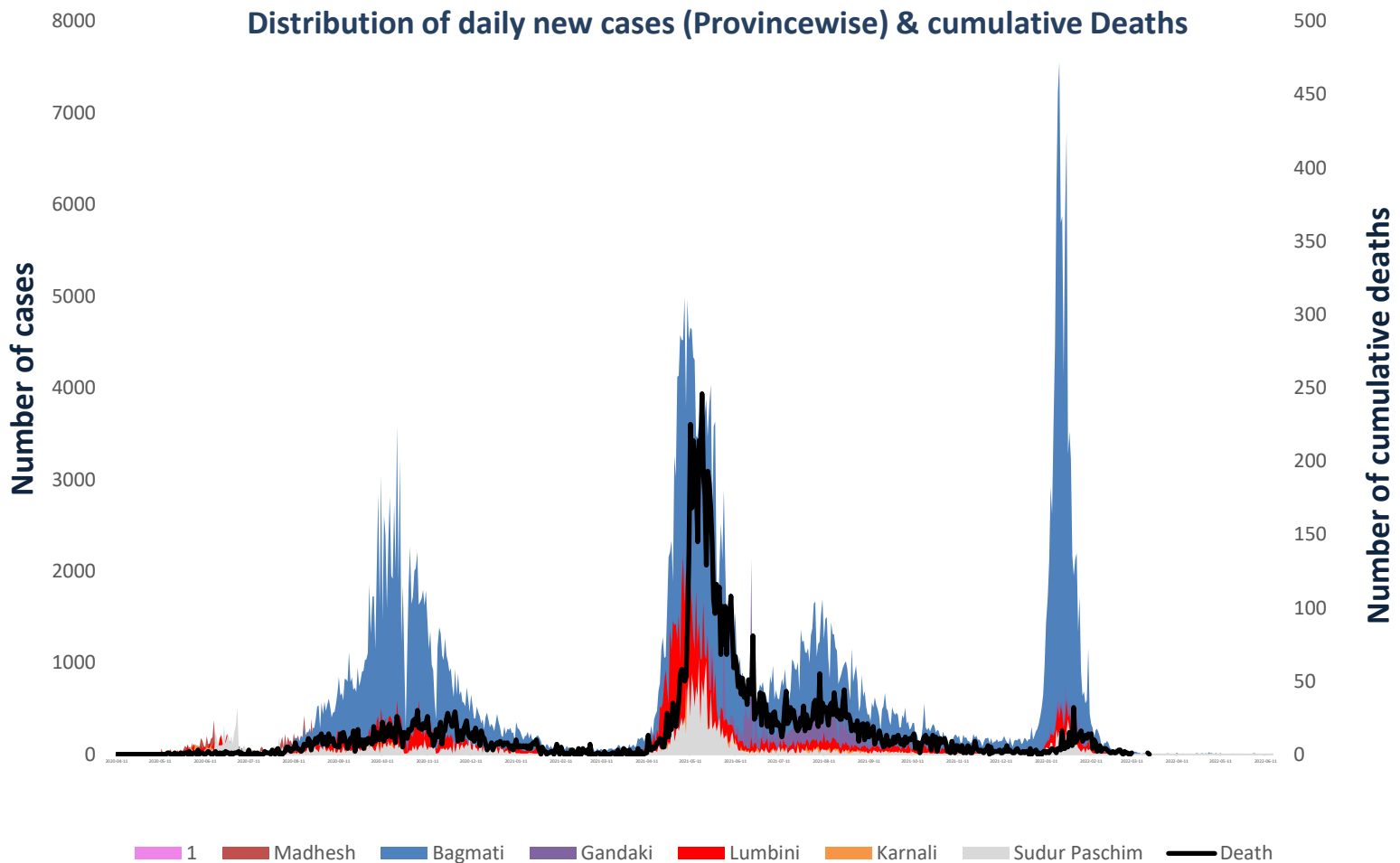
*Included RDT antigen data received from SMS & Email



District wise distribution of new cases (in last 24 hrs)



Distribution of daily new cases (Province wise) & cumulative Deaths



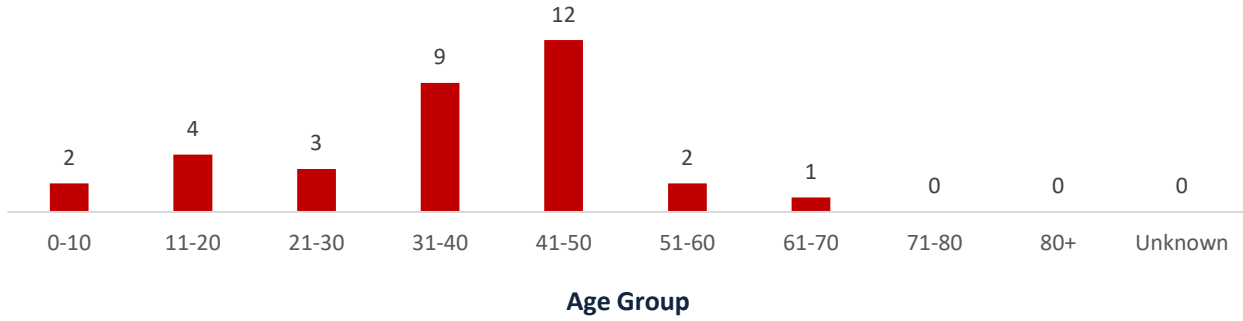
Province-wise Hospital Resource Mapping								
Province	Isolation beds	HDU beds	ICU beds	Ventilators	Oxygen Cylinder	Oxygen Concentrator	Oxygen Plant	Tank
Province 1	819	567	342	148	1314	66	17	2
Madhesh	1680	695	396	124	2388	36	9	2
Bagmati	3283	1191	1423	532	4896	158	32	15
Gandaki	651	444	228	82	2305	85	17	1
Lumbini	452	640	239	56	2766	69	17	3
Karnali	607	96	97	35	405	80	6	0
Sudurpaschim	710	213	72	31	1391	199	6	2
Total	8202	3846	2797	1008	15465	693	104	25

Province wise COVID-19 vaccine administered

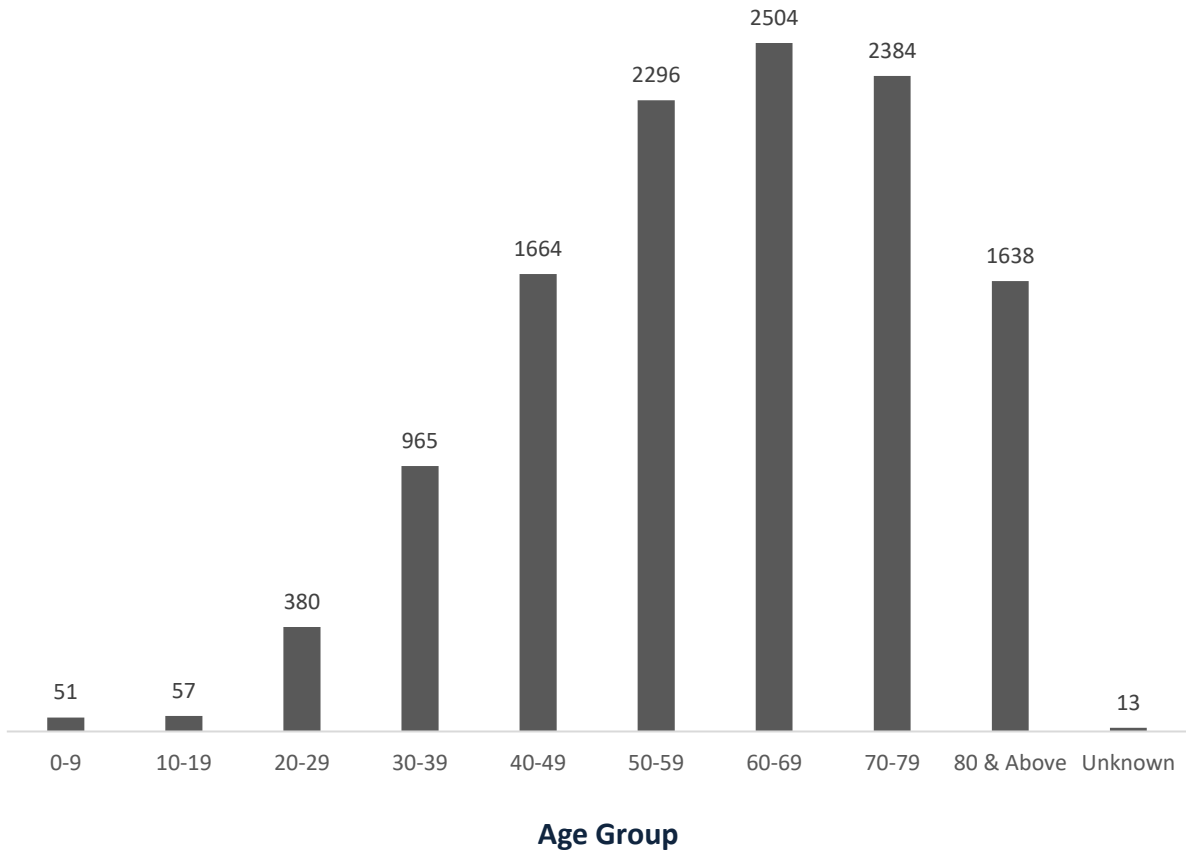
Date: 23-06-2022

Province	Covid Shield			Verocell			J & J		Pfizer			Moderna		
	1st dose	2nd dose	Additional dose	1st dose	2nd dose	Additional dose	Fully vaccinated	Additional dose	1st dose	2nd dose	Additional dose	1st dose	2nd dose	Additional dose
Province 1	861991	844645	661355	1743964	1357064	34863	572719	64860	7112	7228	68477	558795	457639	435650
Madhesh	1214649	1004650	376306	1653592	1437181	52664	813074	49520	13390	17014	50728	750421	633423	152485
Bagmati	1218855	891591	837578	2813864	2595556	122742	726534	23115	298522	213920	103265	365043	306492	90123
Gandaki	429183	403742	470979	984810	981863	71673	337278	17269	3874	3539	30020	268008	242063	93959
Lumbini	1020675	881761	1017164	1625123	1519847	63100	541482	34018	7156	10654	18214	608500	562588	244227
Karnali	207425	191684	267489	567585	479624	28692	164068	7498	3406	3812	21984	243524	195353	42493
Sudur Paschim	399682	336940	318071	936016	805883	43922	290121	22463	8607	10294	98357	390229	355170	148786
Total	5352460	4555013	3948942	10324954	9177018	417656	3445276	218743	342067	266461	391045	3184520	2752728	1207723

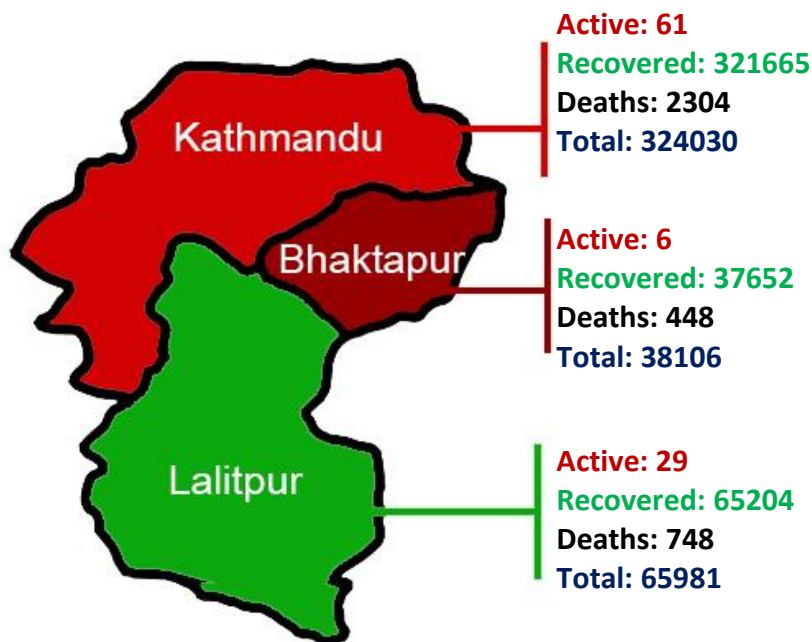
**Age group wise distribution COVID-19 positive cases
(In last 24 hrs)**



Age group wise distribution of COVID-19 death cases (Till today)



COVID-19 Cases in Kathmandu Valley



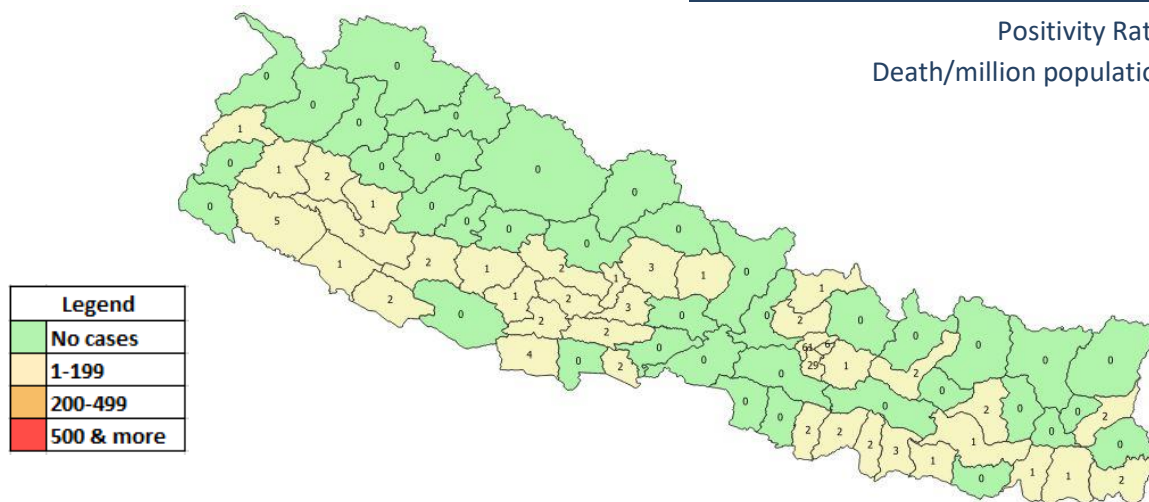
District wise distribution of COVID-19 active cases*

Criteria/ Provinces	1	Madhesh	Bagmati	Gandaki	Lumbini	Karnali	Sudurpaschim
Districts with more than 500 active cases							
Districts with more than 200 cases							
Districts with zero active cases	Okhaldhunga, Solukhumbu, Sankhuwasabha, Dhankuta, Bhojpur, Ilam, Tehrathum, Taplejung	Parsa, Bara, Saptari	Dolakha, Sindhupalchok, Dhading, Makawanpur, Chitawan, Sindhuli	Manang, Mustang, Myagdi, Gorkha, Tanahu, Nawalparasi (P)	Rukum (E), Rupendehi, Dang	Jajarkot, Jumla, Dolpa, Humla, Rukum (W), Kalikot, Kalikot	Bajura, Darchula, Bajhang, Dadeldhura, Kanchanpur

COVID-19 Cases details (Cumulative)

Positivity Rate: 17.0%

Death/million population: 393.4



*Based on permanent address of tests done throughout the country.

Province-wise distribution of Isolation, I.C.U, Ventilator & Death details (Date:23 June 2022)

Province	Home Isolation	Institutional Isolation	Patient in I.C.U	Patient in ventilators	Death
Province 1	9	0	0	0	1,716
Madhesh	10	0	0	0	785
Bagmati	99	3	1	0	5,169
Gandaki	10	0	0	0	1,425
Lumbini	17	0	0	0	1,864
Karnali	6	0	0	0	484
Sudurpaschim	9	0	0	0	509
Total	160	3	1	0	11,952

Number of people in Isolation, I.C.U & Ventilator in Kathmandu valley

Hospital	Hospital Capacity				Patients in				Contact Person	Number
	General beds	HDU beds	ICU beds	Ventilators (Used along with ICU beds)	General	HDU	ICU beds	Ventilators (Used along with ICU beds)		
Armed Police Force Hospital, Balambu	25	155	20	12	0	0	0	0	Dr. Pravin Nepal	9851017542
Shree Birendra Hospital, Chhauni	110	100	25	8	0	1	0	0	Col Dr. Moon Thapa	9841876088
Bir Hospital, Maha Baudha	76	95	59	50	0	0	0	0	Dr. Achyut Karki	9841449232
Nepal Police Hospital, Kathmandu	100	100	30	30	0	0	0	0	DIGP Dr. Sundar Haiju	9841225358
Shukraraj Tropical & Infectious Disease Hospital, Teku	26	50	24	22	0	0	0	0	Dr. Bimal Sharma Chalise	9856027905
TUTH Hospital, Maharajgunj	15	108	45	30	0	0	0	0	Mr. Ram Bikram Adhikari	9851189911
Patan Hospital, Lalitpur	223	73	28	13	0	0	0	0	Dr. Ashish Shrestha	9851061846
Civil Service Hospital, Kathmandu	5	35	15	6	0	0	0	0	Dr Bidesh Bista	9841762180
Bhaktapur Hospital, Bhaktapur	22	36	6	6	0	0	0	0	Dr. Sumitra Gautam	9858023047
National Ayurveda Research & Training Center, Kritipur	150	25			0	0			Dr. Jitendra Shrestha	9851176773
Dhulikhel Hospital	0	30	25	10	0	0	0	0	Dr.Ramesh Makaju Shrestha	9801002260
Total	752	807	277	187	0	1	0	0		

Source: Province and concerned hospitals, 23 June 2022, 14:00Hrs

Note: In order to coordinate with the hospitals within the Kathmandu valley for availability of isolation beds, ICUs, ventilators and ambulances, all are requested to contact the hotline "1133" of the Ministry or above-mentioned contact details.

RT-PCR Tests done in different laboratories

#	Laboratory	Province	Cumulative Tests	In 24 hours	
				Tests	Positive
1	B. P. Koirala Institute of Health Sciences	1	124543	1	0
2	Koshi Hospital, Biratnagar		89611	0	0
3	Mechi Hospital, Jhapa		83731	5	1
4	Provincial Public Health Laboratory Biratnagar		100492	4	0
5	Nobel Medical College Teaching Hospital, Biratnagar		98324	2	0
6	Neuro COVID hospital, Biratnagar		27820	0	0
7	Birat Medical College		21027	0	0
8	B-sure Path Lab and Diagnostic Center,		27833	0	0
9	Dhankuta Hospital		4767	0	0
Total			578148	12	1
10	Gajendra Narayan Singh Hospital, Rajbiraj, Saptari	Madhesh	28529	0	0
11	Provincial Public Health Laboratory, Janakpur		68860	15	0
12	Narayani Hospital, Birgunj		63606	0	0
13	Gaur Hospital PCR Laboratory		12526	0	0
14	Siraha Hospital		7261	0	0
15	Jaleswor Hospital		3743	0	0
16	Kalaiya Hospital		6781	0	0
17	Malangawa Hospital		5259	0	0
	Others (n=2)*		2381	0	0
Total			198946	15	0
18	National Public Health Laboratory, Teku	Bagmati	349222	114	0
19	Shukraraj Tropical and Infectious Disease Hospital		93077	0	0
20	Bharatpur Hospital COVID-19 Diagnostic Lab		83151	0	0
21	Provincial Public Health Laboratory, Dhulikhel		53745	0	0
22	Dhulikhel Hospital, Dhulikhel		63388	0	0
23	Patan Hospital, Lalitpur		82266	6	0
24	NAMS, Bir Hospital, Kathmandu		90468	28	0
25	Tribhuvan University Teaching Hospital (TUTH)		103988	6	0
26	Nepal Police Hospital Laboratory, Kathmandu		34588	0	0
27	Shree Birendra Hospital, Chhauni		92905	20	3
28	Nepal APF Hospital, Balambu, Kathmandu		37989	0	0
29	Star Hospital Laboratory, Sanepa		328631	118	1
30	Nepal Korea Friendship Municipality Hospital		38417	3	0
31	Central Diagnostic Lab and Research Center		188132	159	3
32	BIDH Lab, Lalitpur		187323	62	9
33	KMC Hospital, Kathmandu		130997	0	0
34	HAMS Hospital, Kathmandu		212713	0	0
35	B & B Hospital, Lalitpur		69959	9	5
36	Nepal Mediciti Hospital, Lalitpur		51276	6	1
37	Chitwan Medical College, Bharatpur		70689	0	0
38	Paropakar Maternity and Women's Hospital		11413	0	0
39	Decode Genomics & Research Center, Kathmandu		91118	51	1
40	Intrepid Diagnostic Center Pvt. Ltd., Kathmandu		40971	0	0
41	Kritipur Municipality-TU Biotech Corona Lab		30856	0	0
42	B.P.Koirala Memorial Cancer Hospital Laboratory, Chitwan		45250	0	0
43	NMC Molecular and Clinical Genetic Lab, Jorpati		32738	0	0
44	Trishuli Hospital		22983	0	0
45	Alfa Health Care and Diagnostic Centre, New Baneshwor#		121691	71	1
46	Modern Diagnostic Center Nepal Pvt. Ltd		101004	0	0
47	Manmohan Memorial Teaching Hospital		41394	14	1

#	Laboratory	Province	Cumulative Tests	In 24 hours		
				Tests	Positive	
48	The Leprosy Mission Nepal Anandaban Hospital, Lele, Lalitpur	Bagmati	5340	0	0	
49	antipur Hospital, Tinkune		91857	0	0	
50	Alka Hospital		31546	0	0	
51	Bhaktapur Hospital Lab		25110	3	0	
52	Siddhi Poly Path#		54851	11	1	
53	KGDH Teaching Hospital and Research Centre		47679	0	0	
54	Janamaitri Hospital, kathmandu		10489	0	0	
55	Civil Service Hospital		64867	0	0	
56	Hetauda Hospital, Hetauda		23486	0	0	
57	Crystal Diagnostic Pvt Ltd.		216692	116	1	
58	Sahid Gangalal Hospital		11166	0	0	
59	Charikot Hospital		4178	0	0	
60	Grande Hospital		25294	17	1	
61	Sumeru Hospital		105340	0	0	
62	Mahendra Narayan Nidhi Memorial Hospital		49619	0	0	
63	Nepal Cancer Hospital		4115	0	0	
64	Global Hospital, Lalitpur		26037	78	0	
65	Green City Hospital , Dhapasi-8 Basundhara, Kathmandu		17106	79	0	
66	National Path Lab, Maharajgunj, Kathmandu*		28908	0	0	
67	Nepal Lab House Pvt. Ltd, Pingalasthan-8, Gaushala, Kathmandu		24750	68	1	
68	Nagarik Community Teaching Hospital, Madhyapur Thimi, Bhaktapur	6649	0	0		
69	Sumeru City Hospital, Pulchowk, Lalitpur	5503	46	0		
70	Apollo Diagnostic Center, Dhumbarihi-4, Ktm	507	8	0		
	Others (n=5)*	98878	63	1		
	Total	3882309	1156	30		
71	Pokhara Academy of Health Science, Pokhara	Gandaki	31652	0	0	
72	Provincial Public Health Laboratory, Pokhara		177006	3	1	
73	Life Care Lab, Pokhara		65061	6	1	
74	Madhyabindu Hospital		12783	4	0	
75	Dhaulagiri Hospital, Baglung		18467	0	0	
76	Vyas COVID - 19 PCR Laboratory, Tanahu		1335	0	0	
	Total	306304	13	2		
77	Provincial Public Health Laboratory, Rupandehi	Lumbini	47636	0	0	
78	Bheri Hospital, Nepalgunj, Banke		83418	1	0	
79	Lumbini Provincial Hospital		76946	1	0	
80	National Path Lab & Research Center Pvt. Ltd.		101796	36	0	
81	Rapti Academy of Health Science, Dang		42356	0	0	
82	Bageswari Diagnostic and Polyclinic Center (P.) Ltd		20864	0	0	
83	Nepalgunj Medical College, Kohalpur, Banke		27342	0	0	
84	Universal College of Medical Sciences		18068	0	0	
85	Lumbini Medical College and Teaching Hospital		10293	0	0	
	Others (n=3)*	19827	0	0		
	Total	448546	38	0		
86	Provincial Public Health laboratory, Surkhet	Karnali	72586	0	0	
87	Karnali Academy of Health Science, Jumla		34516	0	0	
	Others(n=2)*		21809	0	0	
	Total	128911	0	0		
88	Dadeldhura Hospital Laboratory, Dadeldhura	Sudurpasc him	29745	0	0	
89	Seti Provincial Hospital, Dhangadi		128184	0	0	
90	Mahakali Hospital		7798	0	0	
91	Kamalbazar Municipality PCR lab		8090	0	0	
	Others(n=3)*		30522	0	0	
	Total	204339	0	0		
	Grand Total	5747503	1234	33		
Number of RT-PCR Testing Laboratories		106	Public	59	Private	47
Total Sample Tested		5747503	Public	2811483	Private	2936020



Government of Nepal
Ministry of Health and Population

List of government hospitals operating COVID-19 care units

(as of 6 August 2021)

S.N.	Name of the health institution	Province
1	B.P. Koirala Institute of Health Sciences, Dharan	1
2	Koshi Hospital, Biratnagar	1
3	Mechi Hospital, Jhapa	1
4	Sankhuwasabha Hospital	1
5	Ilam Hospital	1
6	Udaypur Hospital	1
7	Inaruwa Hospital	1
8	Panchthar Hospital	1
9	Taplejung Hospital	1
10	Tehrathum Hospital	1
11	Okhaldhunga Hospital	1
12	Khotang Hospital	1
13	Bhojpur Hospital	1
14	Solukhumbu Hospital	1
15	Provincial Hospital, Janakpur	Madhesh
16	Gajendra Narayan Singh, Rajbiraj	Madhesh
17	Narayani Hospital, Birgunj	Madhesh
18	Siraha Hospital	Madhesh
19	Jaleswar Hospital	Madhesh
20	Kalaiya Hospital	Madhesh
21	Gaur Hospital	Madhesh
22	Malangwa Hospital	Madhesh
23	Armed Police Force, Balambu	Bagmati
24	Shree Birendra Hospital	Bagmati
25	Bir Hospital	Bagmati
26	National Trauma Center	Bagmati
27	Nepal Police Hospital	Bagmati
28	STIDH, Teku	Bagmati
29	TUTH, Maharajgunj	Bagmati
30	PAHS, Lalitpur	Bagmati
31	Civil Service Hospital	Bagmati
32	Bhaktapur Hospital COVID Treatment Center	Bagmati
33	Paropkar Maternity and Women's Hospital	Bagmati
34	Kanti Children's Hospital, Maharajgunj	Bagmati
35	Manmohan Cardiothoracic Vascular and Transplant Center	Bagmati

S.N.	Name of the health institution	Province
36	National Ayurveda Research and Training Center (NARTC)	Bagmati
37	Sahid Gangalal Hospital	Bagmati
38	Bharatpur Hospital	Bagmati
39	B.P. Koirala Memorial Cancer Hospital	Bagmati
40	Dhading Hospital	Bagmati
41	Sindhuli Hospital	Bagmati
42	Trishuli Hospital	Bagmati
43	Hetauda Hospital	Bagmati
44	Pokhara Academy of Health Sciences	Gandaki
45	Infectious Disease Hospital, Kaski	Gandaki
46	Dhaulagiri Zonal Hospital, Baglung	Gandaki
47	Madhyabindu Hospital	Gandaki
48	Beni Hospital, Myagdi	Gandaki
49	Damauli Hospital, Tanahun	Gandaki
50	Lumbini Provincial Hospital/Dhago Karkhana	Lumbini
51	Bhim Hospital	Lumbini
52	Bheri Hospital	Lumbini
53	Beljhundi Corona Special Hospital	Lumbini
54	Lumbini Provincial Hospital	Lumbini
55	Rapti Academy of Health Sciences	Lumbini
56	Kapilvastu Hospital	Lumbini
57	Nepalgunj Army Hospital	Lumbini
58	Surkhet Provincial Hospital, Surkhet	Karnali
59	Karnali Academy of Health Sciences	Karnali
60	Chaurjahari Hospital	Karnali
61	District Hospital, Mugu	Karnali
62	Humla district	Karnali
63	District Hospital, Kalikot	Karnali
64	District Hospital, Dailekh	Karnali
65	Jajarkot Hospital	Karnali
66	Rukum west district	Karnali
67	Salyan district	Karnali
68	Dolpa Hospital	Karnali
69	Seti Provincial Hospital, Dhangadhi	Sudurpaschim
70	Mahakali Hospital	Sudurpaschim
71	Tikapur Hospital	Sudurpaschim
72	Dadeldhura Hospital	Sudurpaschim
73	Darchula Hospital	Sudurpaschim
74	Batadi District Hospital	Sudurpaschim
75	Bajhang Hospital	Sudurpaschim
76	Achham District Hospital	Sudurpaschim
77	Doti District Hospital	Sudurpaschim
78	Bajura District Hospital	Sudurpaschim

This list will be updated based on the criteria, requesting to send hospital name in e-mail address of this unit at heocmohp@gmail.com if we have missed it.

Global COVID-19 Statistics

546,647,312

Total Cases

18,047,638

(3.3%)

Active Cases

6,345,737

(1.2%)

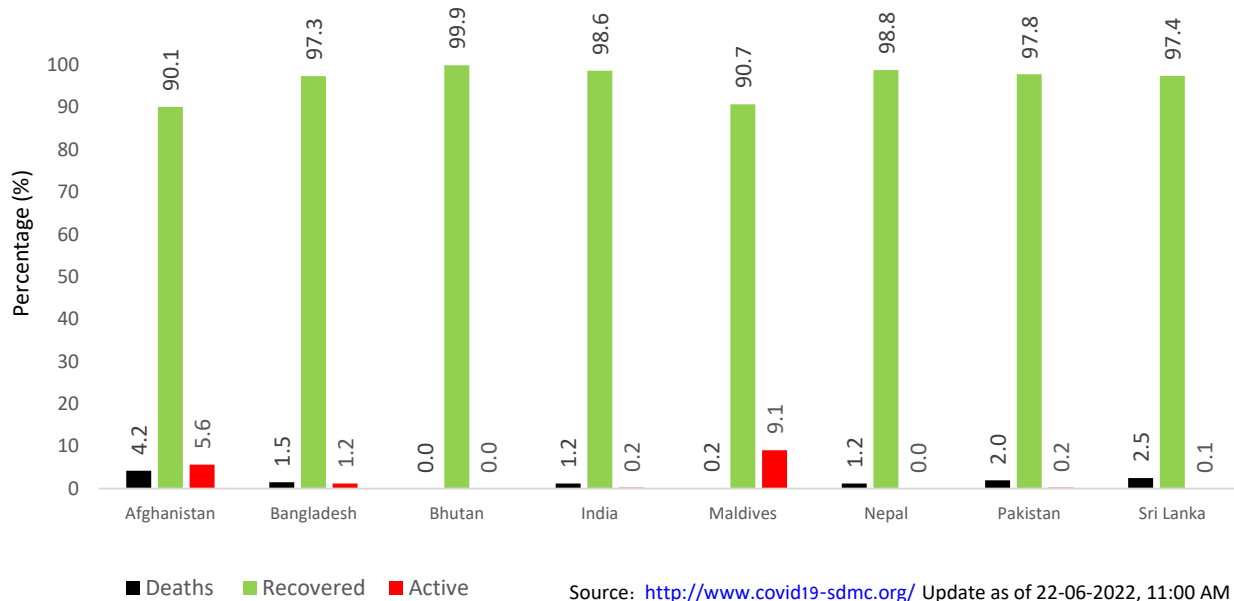
Deaths

522,253,937

(95.5%)

Recovered

COVID-19 cases in the SAARC Member States



Information and Communication

Two Call Centers 1115 (from 6 am to 10 pm) and 1133 (24 hours) have been operationalized since 30th Falgun, 2076 (13 March 2020) to provide counselling service regarding COVID-19 prevention and treatment. People are requested to call these Call Centers for any queries related to COVID-19.

Total number of service users: **364**

People with symptoms of COVID-19 are requested to contact the hotline **1133** or mobile number **9851255839, 9851255837** for inquiries.

Additional Information: Please click [here](#) for all the Standards and Technical Guidelines regarding COVID-19

COVID-19 Hotline Service	1133 (24 hours) 1115 (6 AM to 10 PM)
Web Portal	https://covid19.mohp.gov.np/ https://heoc.mohp.gov.np https://portal.edcd.gov.np/
Official Viber Community	Search "MoHP Nepal COVID-19" on Viber to join the community
Social Media	fb.com/mohpnep fb.com/HEOCMoHP fb.com/edcdnepal
Mobile Application	Search "Hamro Swasthya" on Google Play Store and Apple Store