



# Government of Nepal Ministry of Health and Population

SitRep

#822

## Health Sector Response to COVID-19

Wednesday | 11 May 2022 (28 Baisakh 2079)

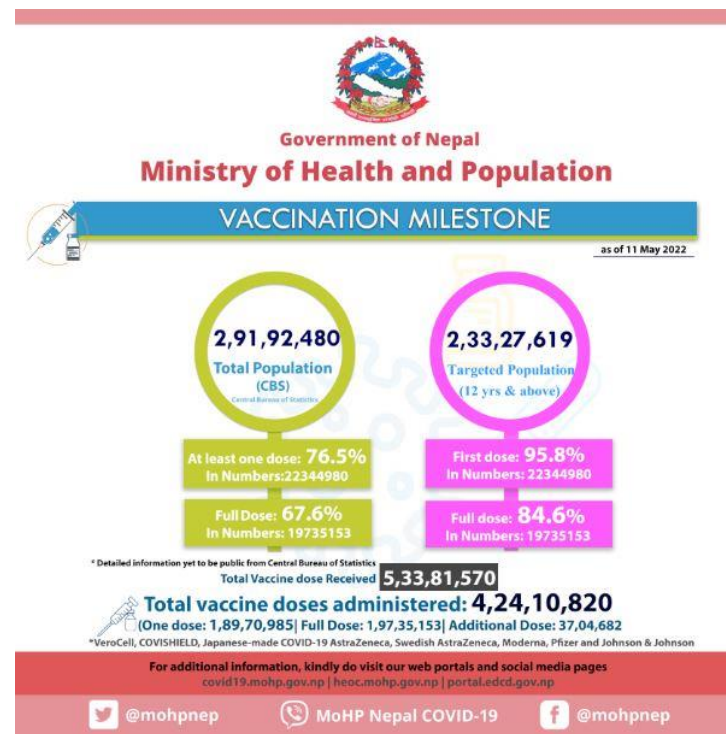
<b>Total Test</b> PCR   Antigen <b>5662311 1180104</b>	<b>Total Positive</b> PCR   Antigen <b>978978 140207</b>	<b>Recovered</b> <b>966839</b>	<b>Recovery Rate</b> <b>98.8%</b>	<b>Deaths</b> <b>11952</b>	<b>Case Fatality Rate</b> <b>1.2%</b>	<b>People in Quarantine</b> <b>106</b>
--	--	-----------------------------------	--------------------------------------	-------------------------------	--	---

Note: The descriptive analysis is based on the data of RT-PCR only, reception of detailed line list of antigen test is in process

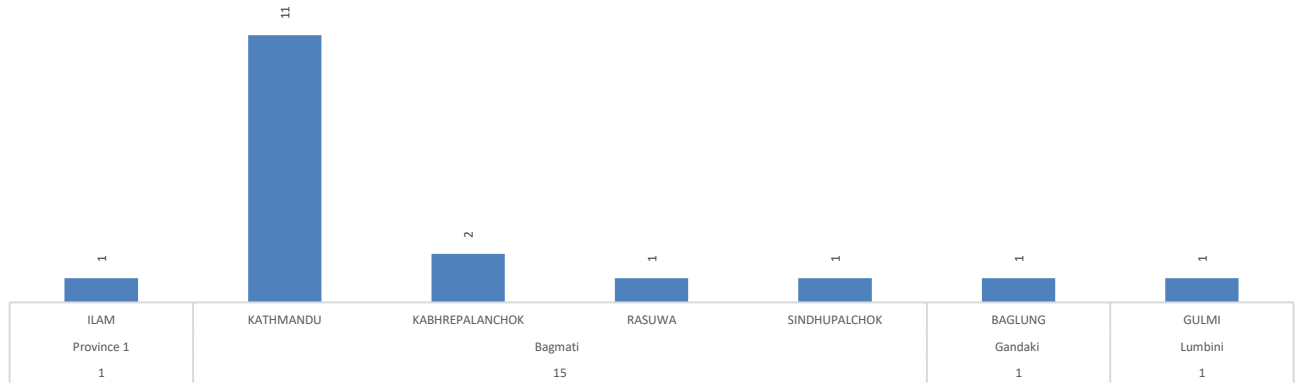
## COVID-19 Updates (In Last 24 hours)

<b>Sample Tested</b>	<b>3788*</b> RT-PCR: 3070, Antigen: 718
<b>New Cases</b>	<b>21*</b> RT-PCR: 18 Antigen: 03
<b>Recovery/ Discharge</b>	<b>16</b>
<b>Vaccinated</b>	<b>11005</b>
<b>Deaths</b>	<b>0</b>
<b>Active Case</b>	<b>187</b>

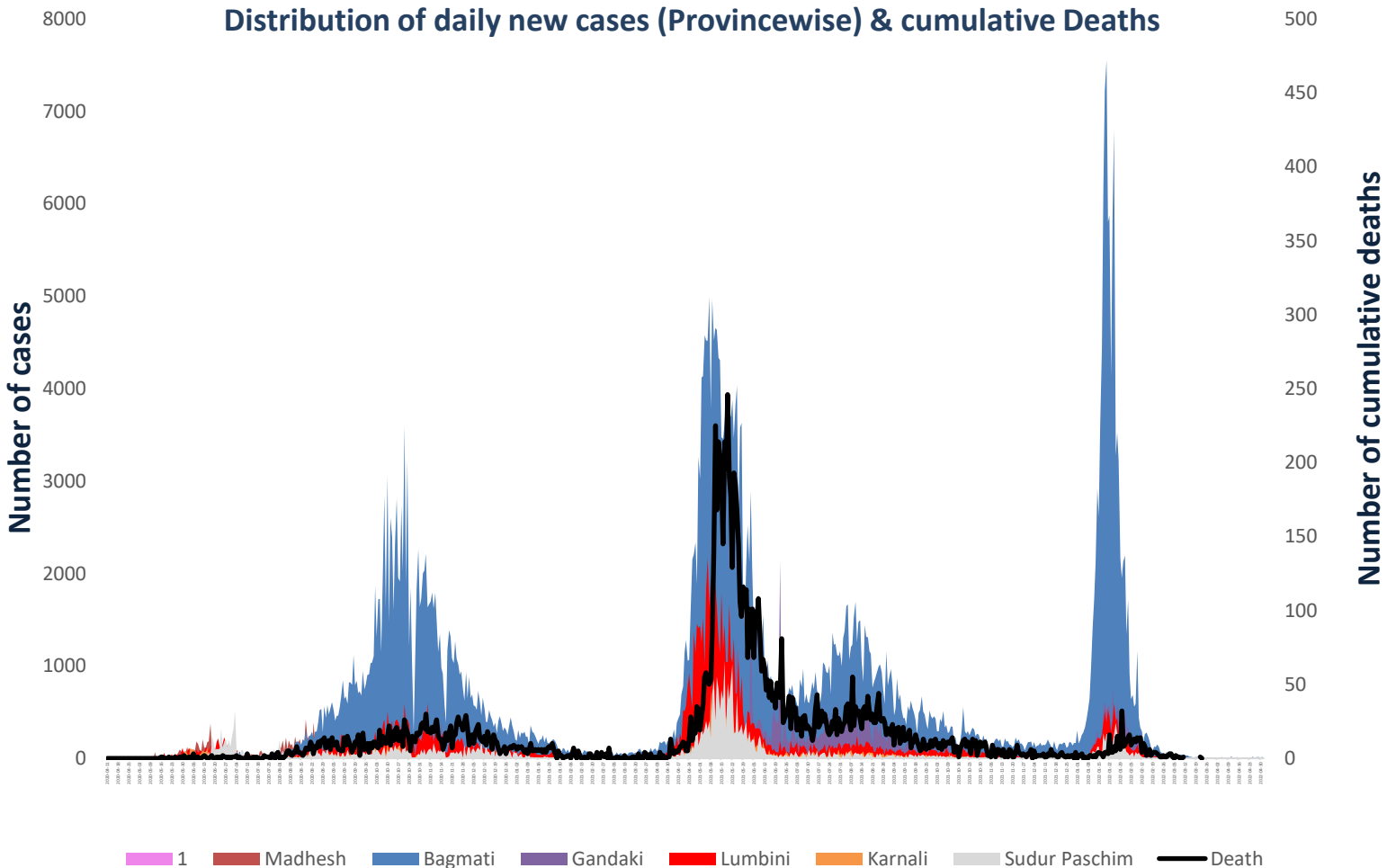
\*Included RDT antigen data received from SMS & Email



### District wise distribution of new cases (in last 24 hrs)



### Distribution of daily new cases (Province wise) & cumulative Deaths



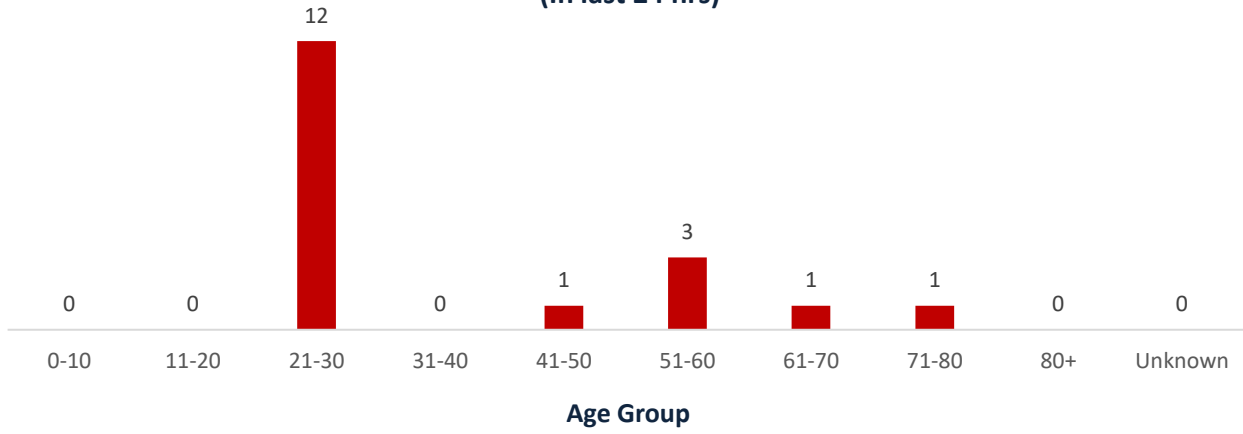
Province-wise Hospital Resource Mapping								
Province	Isolation beds	HDU beds	ICU beds	Ventilators	Oxygen Cylinder	Oxygen Concentrator	Oxygen Plant	Tank
Province 1	819	567	342	148	1314	66	17	2
Madhesh	1680	695	396	124	2388	36	9	2
Bagmati	3283	1191	1423	532	4896	158	32	15
Gandaki	651	444	228	82	2305	85	17	1
Lumbini	452	640	239	56	2766	69	17	3
Karnali	607	96	97	35	405	80	6	0
Sudurpaschim	710	213	72	31	1391	199	6	2
<b>Total</b>	<b>8202</b>	<b>3846</b>	<b>2797</b>	<b>1008</b>	<b>15465</b>	<b>693</b>	<b>104</b>	<b>25</b>

## Province wise COVID-19 vaccine administered

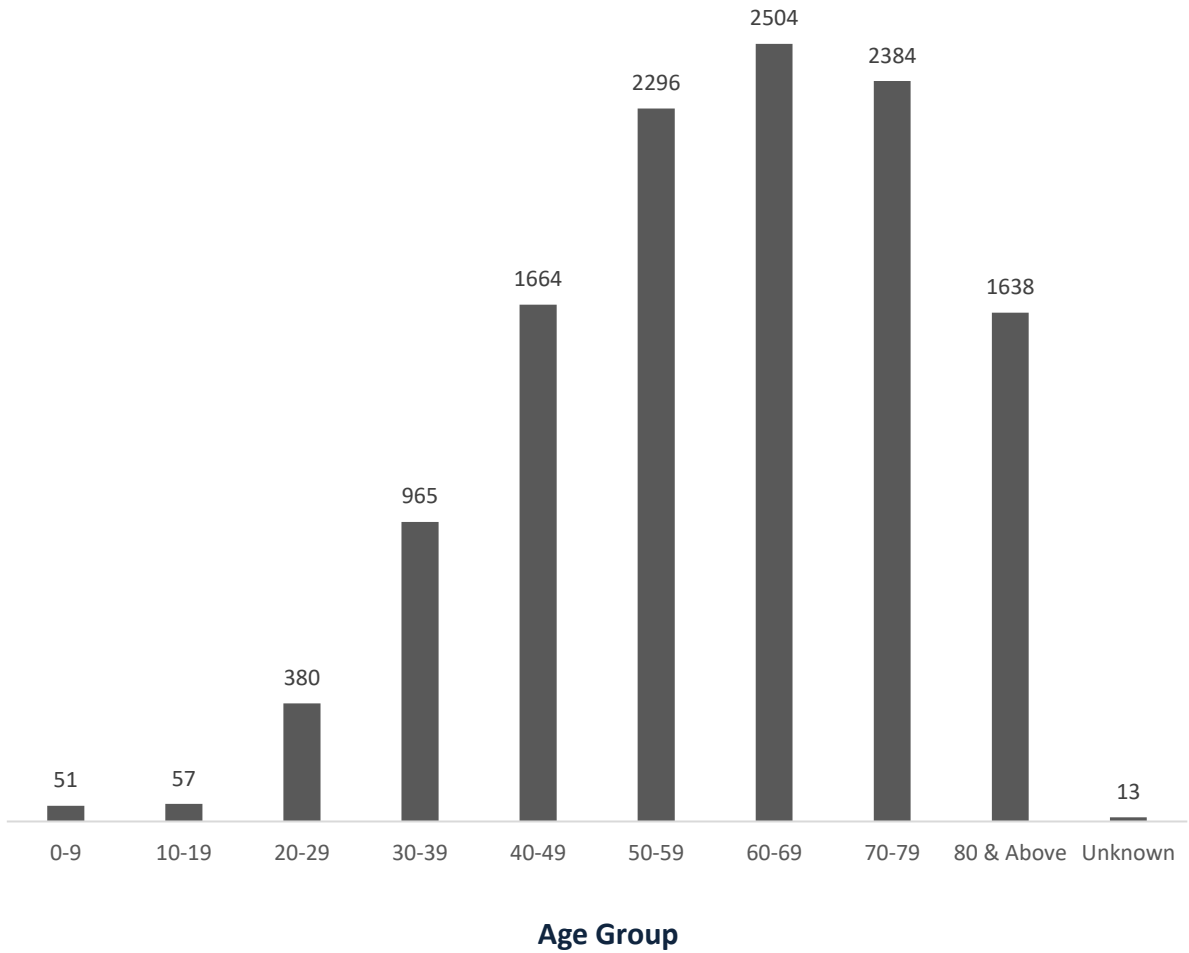
Date: 11-05-2022

Province	Covid Shield			Verocell			J & J		Pfizer		Additio nal dose	Moderna		
	1st dose	2nd dose	Additio nal dose	1st dose	2nd dose	Additional dose	Fully vaccinated	Additio nal dose	1st dose	2nd dose		1st dose	2nd dose	Additional dose
<b>Province 1</b>	838974	811119	385527	1742213	1351628	18134	545326	26195	6088	5371	0	544225	436484	38606
<b>Madhesh</b>	1153014	919573	241003	1620718	1418415	48710	781736	38021	7753	6003	0	726853	572262	26674
<b>Bagmati</b>	1213388	880742	723051	2813601	2591669	118343	722887	19116	295780	210239	58382	358848	295252	38851
<b>Gandaki</b>	428601	401010	400121	984635	981066	65520	336126	15516	3449	3186	0	267019	240226	47056
<b>Lumbini</b>	1012417	857988	701119	1624826	1516950	57793	536684	26769	5518	5387	3362	599850	545810	23429
<b>Karnali</b>	202789	181363	199612	566104	477558	25148	163253	7233	2272	2165	0	239431	189697	6856
<b>Sudur Paschim</b>	396427	323903	272901	935490	798747	37753	287983	18150	3981	3784	274	376721	333561	15457
<b>Total</b>	<b>5245610</b>	<b>4375698</b>	<b>2923334</b>	<b>10287587</b>	<b>9136033</b>	<b>371401</b>	<b>3373995</b>	<b>151000</b>	<b>324841</b>	<b>236135</b>	<b>62018</b>	<b>3112947</b>	<b>2613292</b>	<b>196929</b>

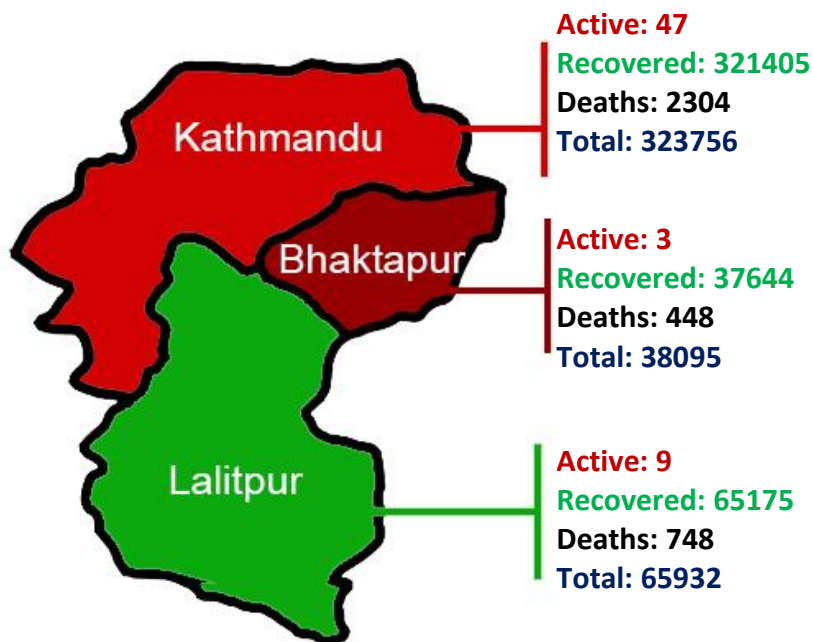
**Age group wise distribution COVID-19 positive cases  
(In last 24 hrs)**



**Age group wise distribution of COVID-19 death cases (Till today)**



# COVID-19 Cases in Kathmandu Valley



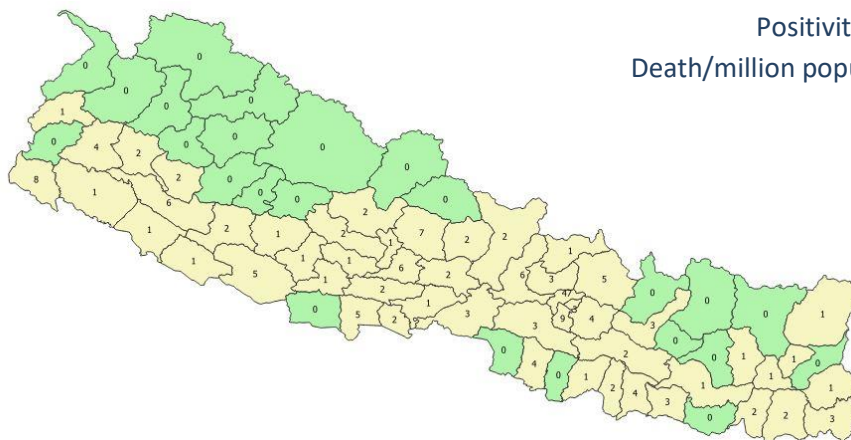
## District wise distribution of COVID-19 active cases\*

Criteria/ Provinces	1	Madhesh	Bagmati	Gandaki	Lumbini	Karnali	Sudurpaschim
Districts with more than 500 active cases							
Districts with more than 200 cases							
Districts with zero active cases	Okhaldhunga, Khotang, Solukhumbu, Panchthar, Sankhuwasabha	Parsa, Saptari, Rautahat	Dolakha	Manang, Mustang	Rukum (E), Kapilvastu	Jajarkot, Jumla, Dolpa, Humla, Rukum (W), Kalikot, Mugu	Bajura, Darchula, Bajhang, Dadeldhura

## COVID-19 Cases details (Cumulative)

Positivity Rate: 17.3%

Death/million population: 393.4



Legend	
	No cases
	1-199
	200-499
	500 & more

\*Based on permanent address of tests done throughout the country.

**Province-wise distribution of Isolation, I.C.U, Ventilator & Death details (Date:11 May 2022)**

Province	Home Isolation	Institutional Isolation	Patient in I.C.U	Patient in ventilators	Death
Province 1	13	0	0	0	1,716
Madhesh	14	0	0	0	785
Bagmati	88	1	0	0	5,169
Gandaki	25	0	0	0	1,425
Lumbini	20	0	0	0	1,864
Karnali	10	0	0	0	484
Sudurpaschim	16	0	0	0	509
<b>Total</b>	<b>186</b>	<b>1</b>	<b>0</b>	<b>0</b>	<b>11,952</b>

**Number of people in Isolation, I.C.U & Ventilator in Kathmandu valley**

Hospital	Hospital Capacity				Patients in				Contact Person	Number
	General beds	HDU beds	ICU beds	Ventilators (Used along with ICU beds)	General	HDU	ICU beds	Ventilators (Used along with ICU beds)		
Armed Police Force Hospital, Balambu	25	155	20	12	0	0	0	0	Dr. Pravin Nepal	9851017542
Shree Birendra Hospital, Chhauni	110	100	25	8	0	0	0	0	Col Dr. Moon Thapa	9841876088
Bir Hospital, Maha Baudha	77	95	59	50	0	0	0	0	Dr. Achyut Karki	9841449232
Nepal Police Hospital, Kathmandu	100	100	30	30	0	0	0	0	DIGP Dr. Sundar Haiju	9841225358
Shukraraj Tropical & Infectious Disease Hospital, Teku	26	50	24	22	0	0	0	0	Dr. Bimal Sharma Chalise	9856027905
TUTH Hospital, Maharajgunj	15	108	45	30	0	0	0	0	Mr. Ram Bikram Adhikari	9851189911
Patan Hospital, Lalitpur	223	73	28	13	0	1	0	0	Dr. Ashish Shrestha	9851061846
Civil Service Hospital, Kathmandu	5	35	15	6	0	0	0	0	Dr Bidesh Bista	9841762180
Bhaktapur Hospital, Bhaktapur	22	36	6	6	0	0	0	0	Dr. Sumitra Gautam	9858023047
National Ayurveda Research & Training Center, Kritipur	150	25			0	0			Dr. Jitendra Shrestha	9851176773
Dhulikhel Hospital	0	30	25	10	0	0	0	0	Dr.Ramesh Makaju Shrestha	9801002260
<b>Total</b>	<b>753</b>	<b>807</b>	<b>277</b>	<b>187</b>	<b>0</b>	<b>1</b>	<b>0</b>	<b>0</b>		

Source: Province and concerned hospitals, 11 May 2022, 14:00Hrs

Note: In order to coordinate with the hospitals within the Kathmandu valley for availability of isolation beds, ICUs, ventilators and ambulances, all are requested to contact the hotline "1133" of the Ministry or above-mentioned contact details.

## RT-PCR Tests done in different laboratories

#	Laboratory	Province	Cumulative Tests	In 24 hours	
				Tests	Positive
1	B. P. Koirala Institute of Health Sciences	1	124395	5	0
2	Koshi Hospital, Biratnagar		89611	0	0
3	Mechi Hospital, Jhapa		83648	3	0
4	Provincial Public Health LaboratoryBiratnagar		100465	0	0
5	Nobel Medical College Teaching Hospital,Biratnagar		98198	5	0
6	Neuro COVID hospital, Biratnagar		27796	1	0
7	Birat Medical College		20929	0	0
8	B-sure Path Lab and Diagnostic Center,		27833	0	0
9	Dhankuta Hospital		4767	0	0
<b>Total</b>			<b>577642</b>	<b>14</b>	<b>0</b>
10	Gajendra Narayan Singh Hospital, Rajbiraj, Saptari	Madhesh	28522	0	0
11	Provincial Public Health Laboratory, Janakpur		68341	0	0
12	Narayani Hospital, Birgunj		63606	0	0
13	Gaur Hospital PCR Laboratory		12453	0	0
14	Siraha Hospital		7261	0	0
15	Jaleswor Hospital		3725	0	0
16	Kalaiya Hospital		6746	0	0
17	Malangawa Hospital		5256	0	0
	Others (n=2)*		2381	0	0
<b>Total</b>			<b>198291</b>	<b>0</b>	<b>0</b>
18	National Public Health Laboratory, Teku	Bagmati	347080	8	0
19	Shukraraj Tropical and Infectious Disease Hospital		92621	0	0
20	Bharatpur Hospital COVID-19 Diagnostic Lab		83151	0	0
21	Provincial Public Health Laboratory, Dhulikhel		53675	17	0
22	Dhulikhel Hospital, Dhulikhel		63388	0	0
23	Patan Hospital, Lalitpur		81707	80	0
24	NAMS, Bir Hospital, Kathmandu		89617	32	0
25	Tribhuvan University Teaching Hospital (TUTH)		103618	10	0
26	Nepal Police Hospital Laboratory, Kathmandu		34574	0	0
27	Shree Birendra Hospital, Chhauni		92000	45	0
28	Nepal APF Hospital, Balambu, Kathmandu		37949	14	0
29	Star Hospital Laboratory, Sanepa		321389	0	0
30	Nepal Korea Friendship Municipality Hospital		37999	36	1
31	Central Diagnostic Lab and Research Center		181731	194	5
32	BIDH Lab, Lalitpur		185982	31	0
33	KMC Hospital, Kathmandu		129450	0	0
34	HAMS Hospital, Kathmandu		206871	148	1
35	B & B Hospital, Lalitpur		69495	10	0
36	Nepal Mediciti Hospital, Lalitpur		50975	13	0
37	Chitwan Medical College, Bharatpur		70689	0	0
38	Paropakar Maternity and Women's Hospital		11368	0	0
39	Decode Genomics & Research Center, Kathmandu		88291	126	1
40	Intrepid Diagnostic Center Pvt. Ltd., Kathmandu		40965	0	0
41	Kritipur Municipality-TU Biotech Corona Lab		30728	0	0
42	B.P.Koirala Memorial Cancer Hospital Laboratory, Chitwan		45067	0	0
43	NMC Molecular and Clinical Genetic Lab, Jorpati		32448	6	0
44	Trishuli Hospital		22983	0	0
45	Alfa Heath Care and Diagnostic Centre,New Baneshwor#		117984	110	3
46	Modern Diagnostic Center Nepal Pvt. Ltd		97490	0	0
47	Manmohan Memorial Teaching Hospital		40687	22	0

#	Laboratory	Province	Cumulative Tests	In 24 hours		
				Tests	Positive	
48	The Leprosy Mission Nepal Anandaban Hospital, Lele, Lalitpur	Bagmati	5340	0	0	
49	Kantipur Hospital, Tinkune		91857	0	0	
50	Alka Hospital		31195	12	0	
51	Bhaktapur Hospital Lab		24946	4	0	
52	Siddhi Poly Path#		53462	59	1	
53	KGDH Teaching Hospital and Research Centre		47492	0	0	
54	Janamaitri Hospital, kathmandu		10489	0	0	
55	Civil Service Hospital		63196	672	0	
56	Hetauda Hospital, Hetauda		23486	0	0	
57	Crystal Diagnostic Pvt Ltd.		209221	241	2	
58	Sahid Gangalal Hospital		11166	0	0	
59	Charikot Hospital		4178	0	0	
60	Grande Hospital		24351	23	0	
61	Sumeru Hospital		96979	223	2	
62	Mahendra Narayan Nidhi Memorial Hospital		46320	141	2	
63	Nepal Cancer Hospital		4115	0	0	
64	Global Hospital, Lalitpur		23964	70	0	
65	Green City Hospital , Dhapasi-8 Basundhara, Kathmandu		14225	90	0	
66	National Path Lab, Maharajgunj, Kathmandu*		25721	296	0	
67	Nepal Lab House Pvt. Ltd, Pingalasthan-8, Gaushala, Kathmandu		21068	173	0	
68	Nagarik Community Teaching Hospital, Madhyapur Thimi, Bhaktapur	6649	0	0		
69	Sumeru City Hospital, Pulchowk, Lalitpur	3550	0	0		
70	Apollo Diagnostic Center, Dhumbarihi-4, Ktm	65	49	0		
	Others (n=5)*	95072	80	0		
	<b>Total</b>	<b>3800079</b>	<b>3035</b>	<b>18</b>		
71	Pokhara Academy of Health Science, Pokhara	Gandaki	31652	0	0	
72	Provincial Public Health Laboratory, Pokhara		176780	0	0	
73	Life Care Lab, Pokhara		64552	0	0	
74	Madhyabindu Hospital		12728	3	0	
75	Dhaulagiri Hospital, Baglung		18467	0	0	
76	Vyas COVID - 19 PCR Laboratory, Tanahu		1319	0	0	
	<b>Total</b>	<b>305498</b>	<b>3</b>	<b>0</b>		
77	Provincial Public Health Laboratory, Rupandehi	Lumbini	47636	0	0	
78	Bheri Hospital, Nepalgunj, Banke		83363	6	0	
79	Lumbini Provincial Hospital		76811	6	0	
80	National Path Lab & Research Center Pvt. Ltd.		101164	0	0	
81	Rapti Academy of Health Science, Dang		42351	0	0	
82	Bageswari Diagnostic and Polyclinic Center (P.) Ltd		20832	0	0	
83	Nepalgunj Medical College, Kohalpur, Banke		27335	2	0	
84	Universal College of Medical Sciences		18065	3	0	
85	Lumbini Medical College and Teaching Hospital		10293	0	0	
	Others (n=3)*	19827	0	0		
	<b>Total</b>	<b>447677</b>	<b>17</b>	<b>0</b>		
86	Provincial Public Health laboratory, Surkhet	Karnali	72586	0	0	
87	Karnali Academy of Health Science, Jumla		34516	0	0	
	Others(n=2)*		21809	0	0	
	<b>Total</b>	<b>128911</b>	<b>0</b>	<b>0</b>		
88	Dadeldhura Hospital Laboratory, Dadeldhura	Sudurpasc him	29742	0	0	
89	Seti Provincial Hospital, Dhangadi		128062	0	0	
90	Mahakali Hospital		7797	1	0	
91	Kamalbazar Municipality PCR lab		8090	0	0	
	Others(n=3)*		30522	0	0	
	<b>Total</b>	<b>204213</b>	<b>1</b>	<b>0</b>		
	<b>Grand Total</b>	<b>5662311</b>	<b>3070</b>	<b>18</b>		
<b>Number of RT-PCR Testing Laboratories</b>		<b>106</b>	<b>Public</b>	<b>59</b>	<b>Private</b>	<b>47</b>
<b>Total Sample Tested</b>		<b>5662311</b>	<b>Public</b>	<b>2802354</b>	<b>Private</b>	<b>2859957</b>





**Government of Nepal**  
**Ministry of Health and Population**

List of government hospitals operating COVID-19 care units  
(as of 6 August 2021)

<b>S.N.</b>	<b>Name of the health institution</b>	<b>Province</b>
1	B.P. Koirala Institute of Health Sciences, Dharan	1
2	Koshi Hospital, Biratnagar	1
3	Mechi Hospital, Jhapa	1
4	Sankhuwasabha Hospital	1
5	Ilam Hospital	1
6	Udaypur Hospital	1
7	Inaruwa Hospital	1
8	Panchthar Hospital	1
9	Taplejung Hospital	1
10	Tehrathum Hospital	1
11	Okhaldhunga Hospital	1
12	Khotang Hospital	1
13	Bhojpur Hospital	1
14	Solukhumbu Hospital	1
15	Provincial Hospital, Janakpur	Madhesh
16	Gajendra Narayan Singh, Rajbiraj	Madhesh
17	Narayani Hospital, Birgunj	Madhesh
18	Siraha Hospital	Madhesh
19	Jaleswar Hospital	Madhesh
20	Kalaiya Hospital	Madhesh
21	Gaur Hospital	Madhesh
22	Malangwa Hospital	Madhesh
23	Armed Police Force, Balambu	Bagmati
24	Shree Birendra Hospital	Bagmati
25	Bir Hospital	Bagmati
26	National Trauma Center	Bagmati
27	Nepal Police Hospital	Bagmati
28	STIDH, Teku	Bagmati
29	TUTH, Maharajgunj	Bagmati
30	PAHS, Lalitpur	Bagmati
31	Civil Service Hospital	Bagmati
32	Bhaktapur Hospital COVID Treatment Center	Bagmati
33	Paropkar Maternity and Women's Hospital	Bagmati
34	Kanti Children's Hospital, Maharajgunj	Bagmati
35	Manmohan Cardiothoracic Vascular and Transplant Center	Bagmati

<b>S.N.</b>	<b>Name of the health institution</b>	<b>Province</b>
36	National Ayurveda Research and Training Center (NARTC)	Bagmati
37	Sahid Gangalal Hospital	Bagmati
38	Bharatpur Hospital	Bagmati
39	B.P. Koirala Memorial Cancer Hospital	Bagmati
40	Dhading Hospital	Bagmati
41	Sindhuli Hospital	Bagmati
42	Trishuli Hospital	Bagmati
43	Hetauda Hospital	Bagmati
44	Pokhara Academy of Health Sciences	Gandaki
45	Infectious Disease Hospital, Kaski	Gandaki
46	Dhaulagiri Zonal Hospital, Baglung	Gandaki
47	Madhyabindu Hospital	Gandaki
48	Beni Hospital, Myagdi	Gandaki
49	Damauli Hospital, Tanahun	Gandaki
50	Lumbini Provincial Hospital/Dhago Karkhana	Lumbini
51	Bhim Hospital	Lumbini
52	Bheri Hospital	Lumbini
53	Beljhundi Corona Special Hospital	Lumbini
54	Lumbini Provincial Hospital	Lumbini
55	Rapti Academy of Health Sciences	Lumbini
56	Kapilvastu Hospital	Lumbini
57	Nepalgunj Army Hospital	Lumbini
58	Surkhet Provincial Hospital, Surkhet	Karnali
59	Karnali Academy of Health Sciences	Karnali
60	Chaurjahari Hospital	Karnali
61	District Hospital, Mugu	Karnali
62	Humla district	Karnali
63	District Hospital, Kalikot	Karnali
64	District Hospital, Dailekh	Karnali
65	Jajarkot Hospital	Karnali
66	Rukum west district	Karnali
67	Salyan district	Karnali
68	Dolpa Hospital	Karnali
69	Seti Provincial Hospital, Dhangadhi	Sudurpaschim
70	Mahakali Hospital	Sudurpaschim
71	Tikapur Hospital	Sudurpaschim
72	Dadeldhura Hospital	Sudurpaschim
73	Darchula Hospital	Sudurpaschim
74	Batadi District Hospital	Sudurpaschim
75	Bajhang Hospital	Sudurpaschim
76	Achham District Hospital	Sudurpaschim
77	Doti District Hospital	Sudurpaschim
78	Bajura District Hospital	Sudurpaschim

This list will be updated based on the criteria, requesting to send hospital name in e-mail address of this unit at [heocmohp@gmail.com](mailto:heocmohp@gmail.com) if we have missed it.

## Global COVID-19 Statistics

**518,566,678**

Total Cases

**38,833,182**

**(7.5%)**

Active Cases

**6,280,390**

**(1.2%)**

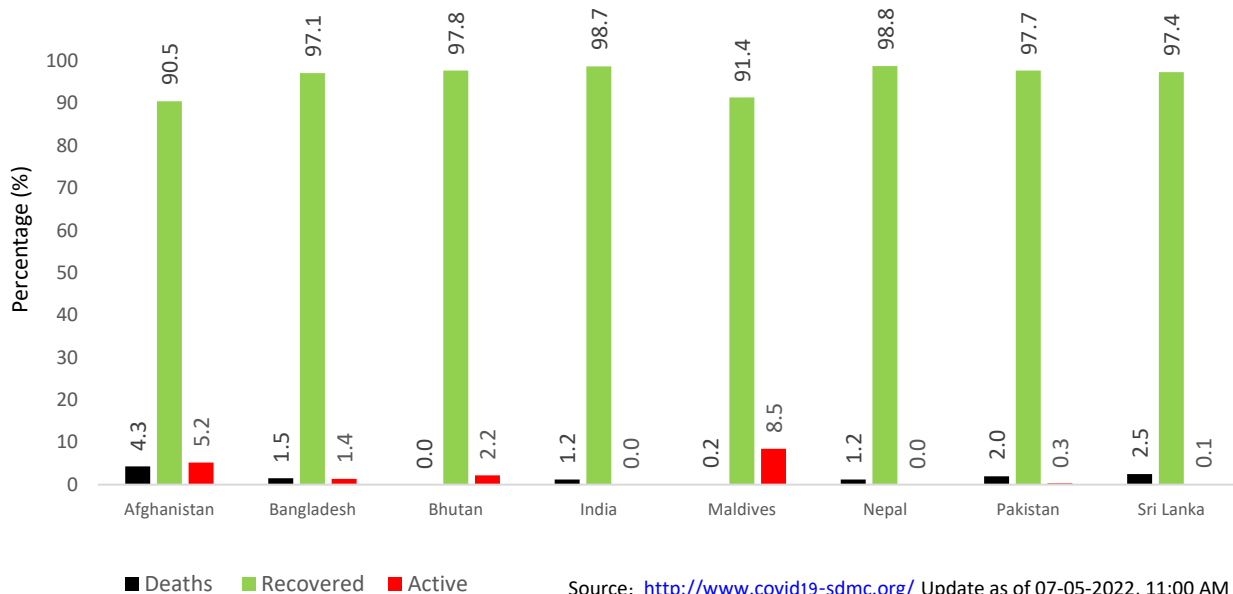
Deaths

**473,453,106**

**(91.3%)**

Recovered

### COVID-19 cases in the SAARC Member States



## Information and Communication

Two Call Centers 1115 (from 6 am to 10 pm) and 1133 (24 hours) have been operationalized since 30th Falgun, 2076 (13 March 2020) to provide counselling service regarding COVID-19 prevention and treatment. People are requested to call these Call Centers for any queries related to COVID-19.

Total number of service users: **326**

People with symptoms of COVID-19 are requested to contact the hotline **1133** or mobile number **9851255839, 9851255837** for inquiries.

**Additional Information:** Please click [here](#) for all the Standards and Technical Guidelines regarding COVID-19

COVID-19 Hotline Service	1133 (24 hours)   1115 (6 AM to 10 PM)
Web Portal	<a href="https://covid19.mohp.gov.np/">https://covid19.mohp.gov.np/</a>   <a href="https://heoc.mohp.gov.np/">https://heoc.mohp.gov.np</a>   <a href="https://portal.edcd.gov.np/">https://portal.edcd.gov.np/</a>
Official Viber Community	Search "MoHP Nepal COVID-19" on Viber to join the community
Social Media	<a href="fb.com/mohpnep">fb.com/mohpnep</a>   <a href="fb.com/HEOCMoHP">fb.com/HEOCMoHP</a>   <a href="fb.com/edcdnepal">fb.com/edcdnepal</a>
Mobile Application	Search "Hamro Swasthya" on Google Play Store and Apple Store