



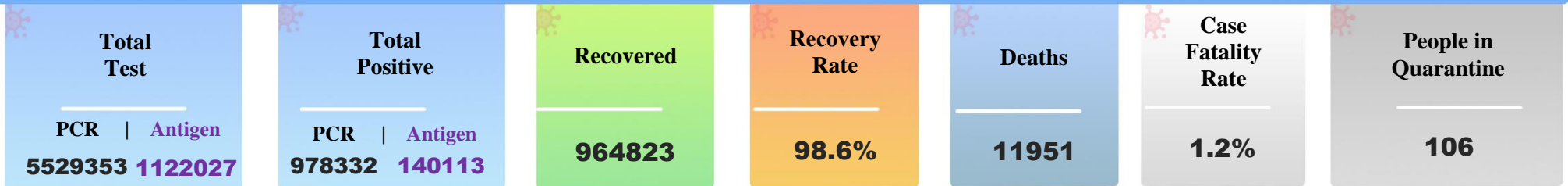
Government of Nepal  
Ministry of Health and Population

SitRep

#777

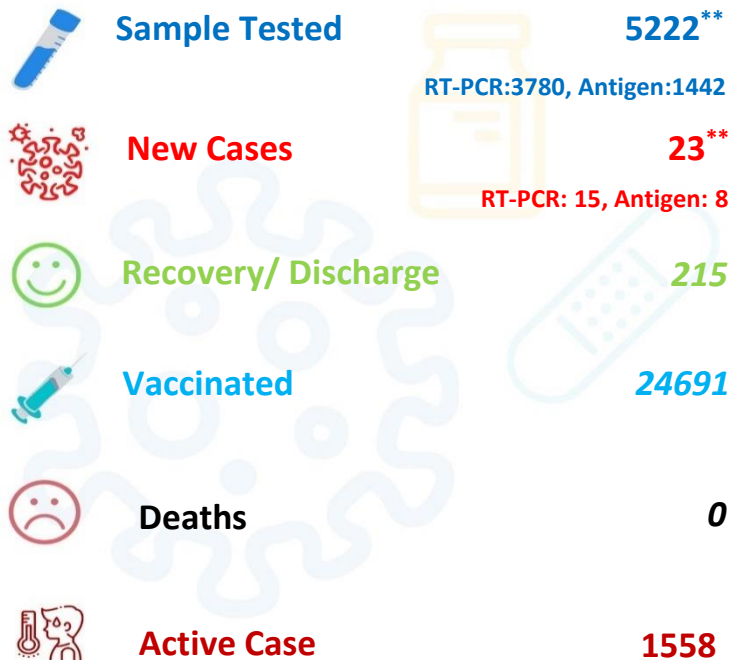
Health Sector Response to COVID-19

Sunday | 27 March 2022 (13 Chaitra 2078)

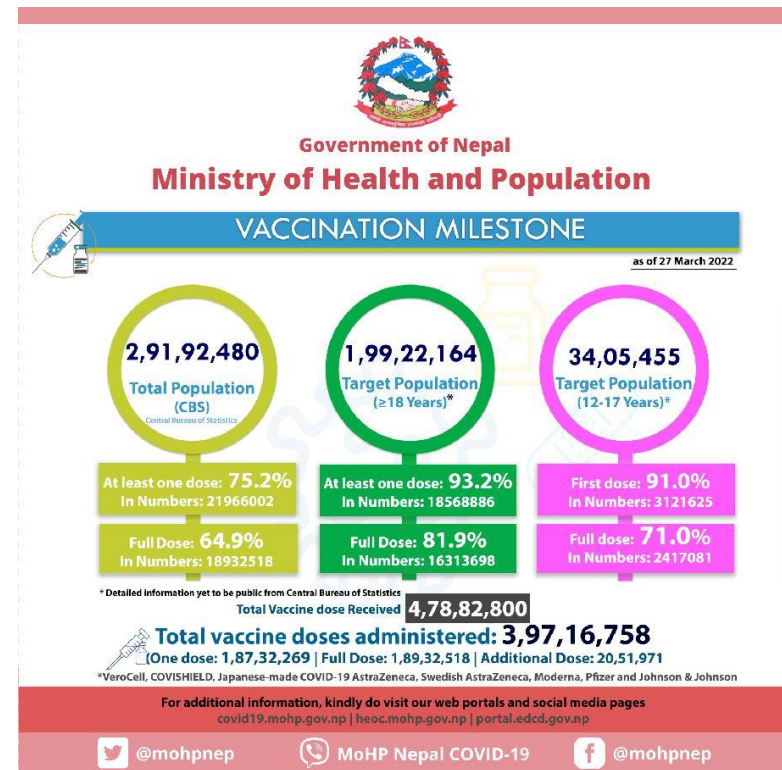


Note: The descriptive analysis is based on the data of RT-PCR only, reception of detailed line list of antigen test is in process

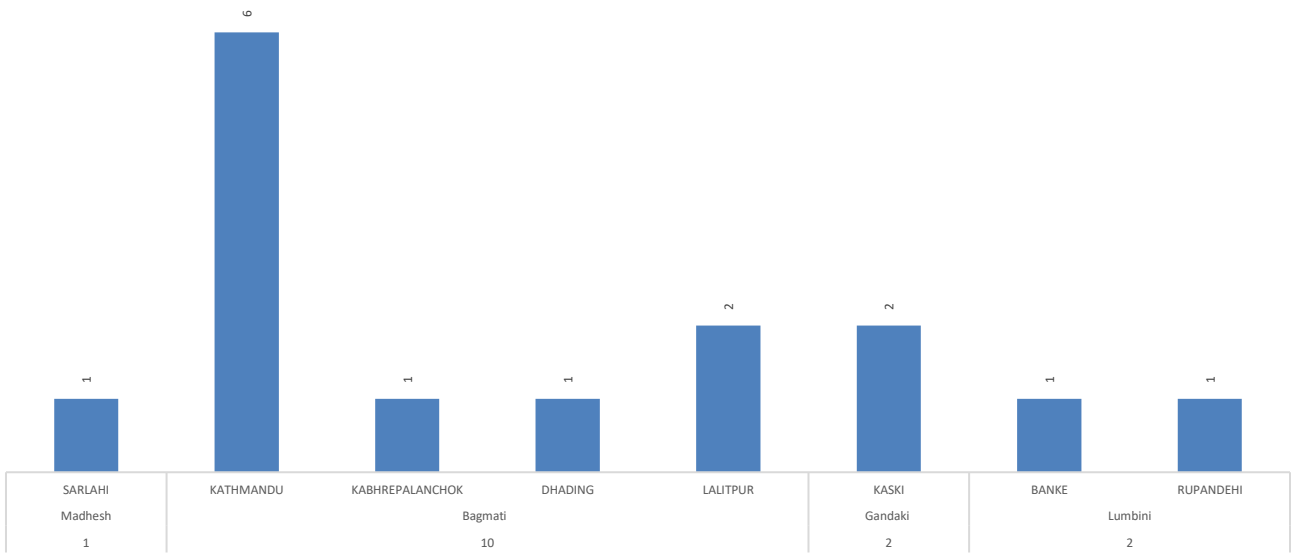
COVID-19 Updates (In Last 24 hours)



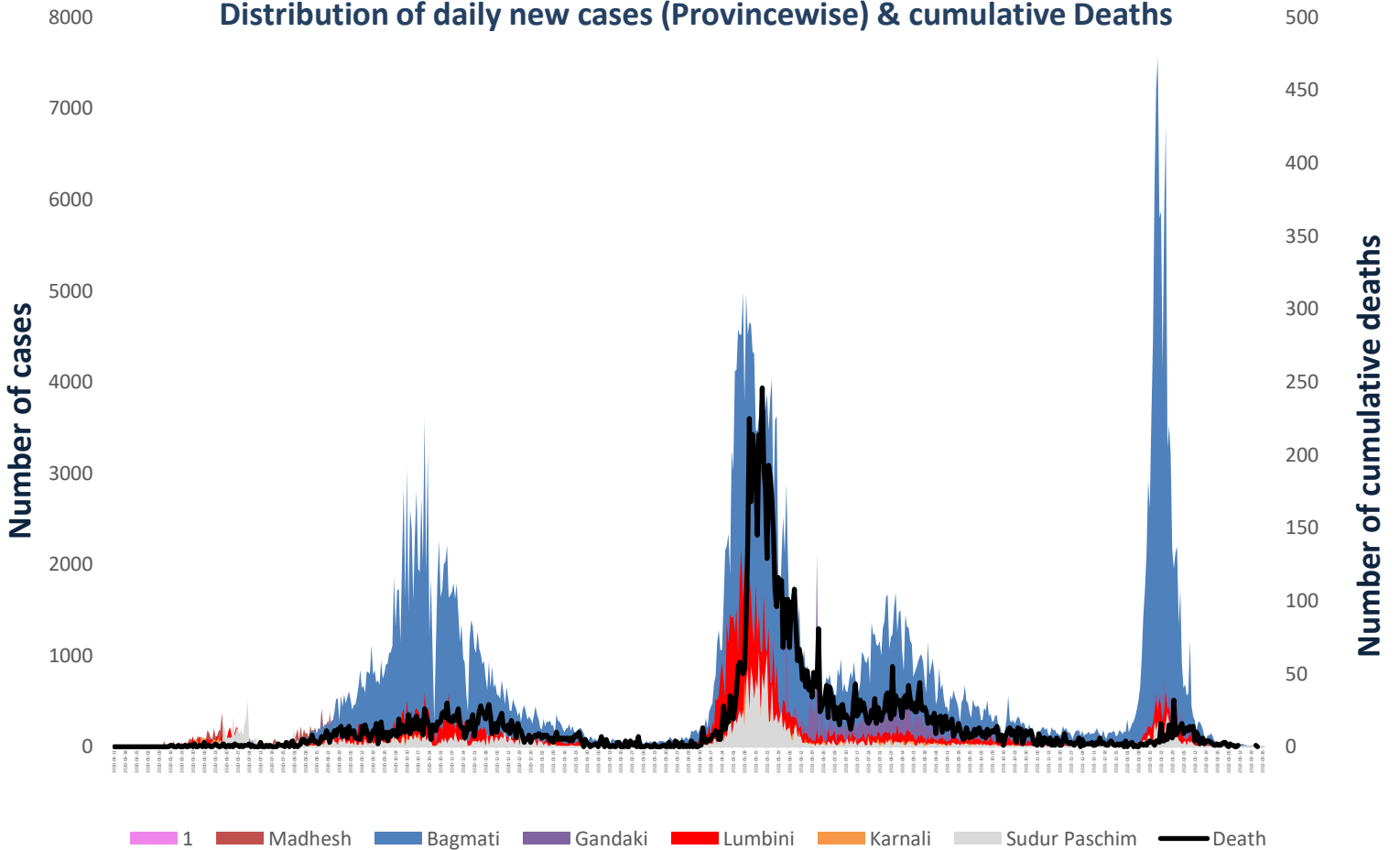
\*\*Included RDT antigen data received from SMS & Email



## District wise distribution of new cases (in last 24 hrs)



## Distribution of daily new cases (Province wise) & cumulative Deaths



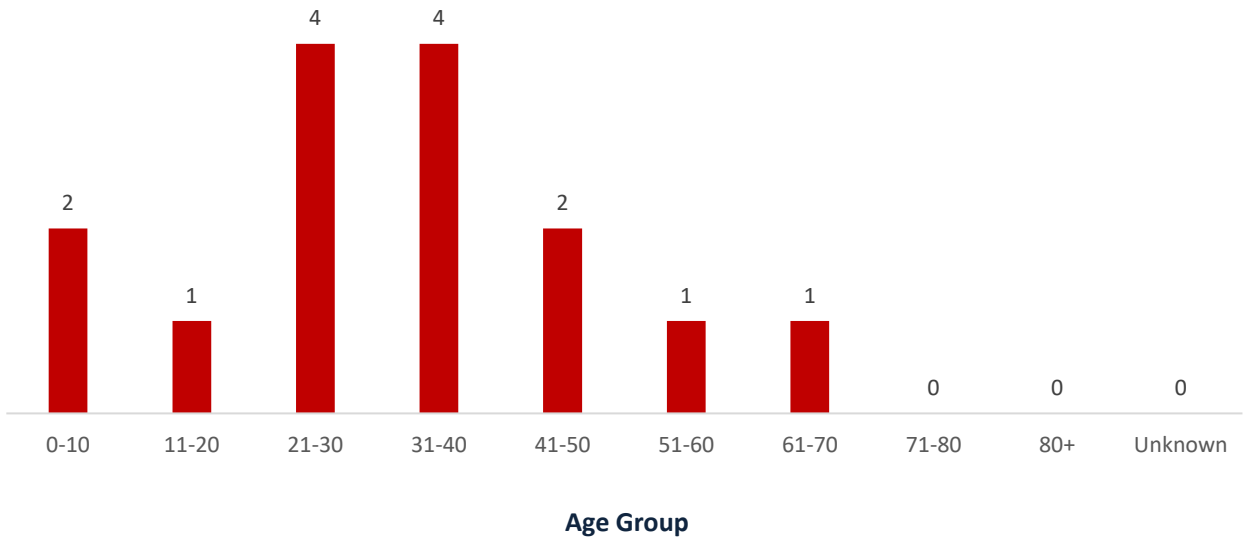
Province-wise Hospital Resource Mapping								
Province	Isolation beds	HDU beds	ICU beds	Ventilators	Oxygen Cylinder	Oxygen Concentrator	Oxygen Plant	Tank
Province 1	819	567	342	148	1314	66	17	2
Madhesh	1680	695	396	124	2388	36	8	2
Bagmati	3283	1191	1423	532	4896	158	28	15
Gandaki	651	444	228	82	2305	85	17	1
Lumbini	452	640	239	56	2766	69	16	3
Karnali	607	96	97	35	405	80	7	0
Sudurpaschim	710	213	72	31	1391	199	5	2
<b>Total</b>	<b>8202</b>	<b>3846</b>	<b>2797</b>	<b>1008</b>	<b>15465</b>	<b>693</b>	<b>98</b>	<b>25</b>

## Province wise COVID-19 vaccine administered

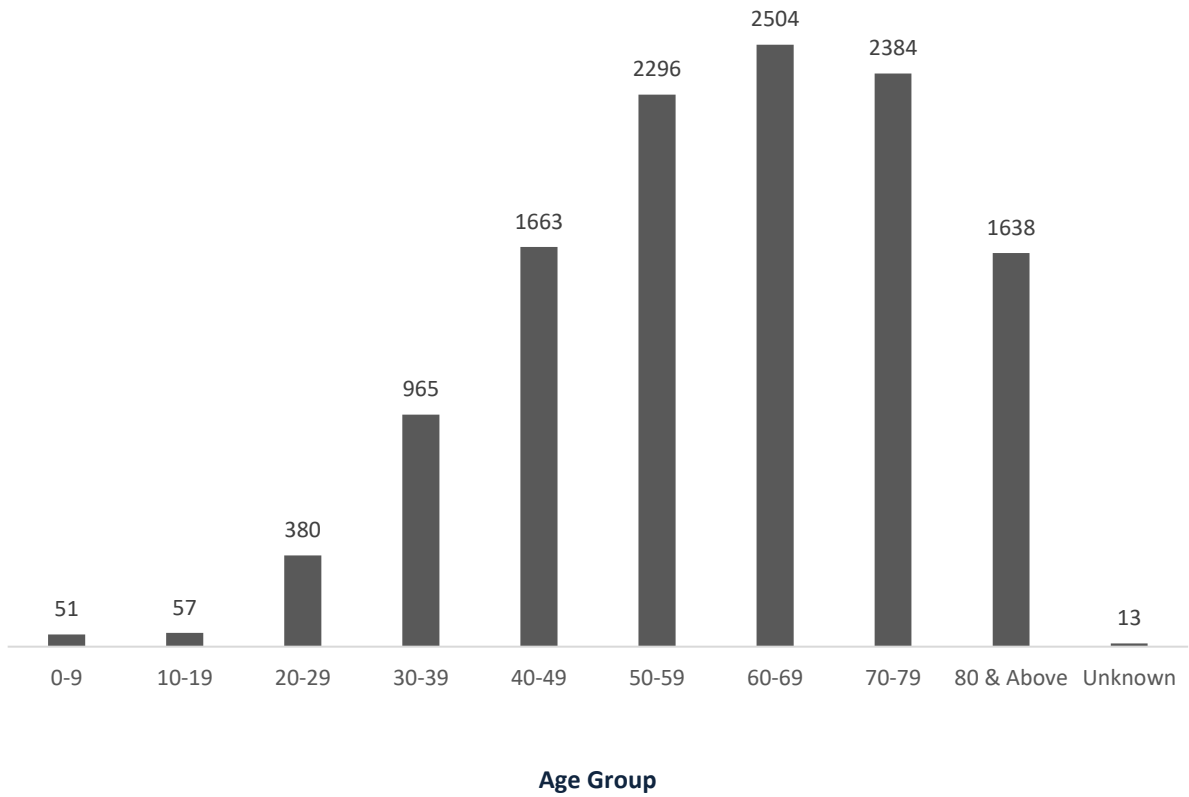
Date: 27-03-2022

Province	Covid Shield			Verocell			J & J		Pfizer		Additio nal dose	Moderna		
	1st dose	2nd dose	Additio nal dose	1st dose	2nd dose	Additional dose	Fully vaccinated	Additio nal dose	1st dose	2nd dose		1st dose	2nd dose	Additional dose
Province 1	820918	781347	173427	1735183	1344649	13004	541277	23600	6088	5371	0	543538	402182	30012
Madhesh	1116821	805084	115876	1612855	1397479	37896	717016	22105	7753	6003	0	699054	424155	7296
Bagmati	1160550	816869	491299	2790684	2549857	110628	712272	11159	295583	209527	57117	350267	275145	27232
Gandaki	426977	394482	220841	983442	978848	45640	331178	6367	3449	3186	0	268447	239001	30199
Lumbini	1001461	803817	313703	1622702	1495095	47408	493897	10047	5359	5119	3240	597873	538864	18536
Karnali	186681	157533	76985	559634	468367	18774	156503	5501	2272	2165	0	238571	189168	6629
Sudur Paschim	384813	293708	133871	932432	792830	28993	281590	11306	3981	3784	0	374881	315150	13637
<b>Total</b>	<b>5098221</b>	<b>4052840</b>	<b>1526002</b>	<b>10236932</b>	<b>9027125</b>	<b>302343</b>	<b>3233733</b>	<b>90085</b>	<b>324485</b>	<b>235155</b>	<b>60357</b>	<b>3072631</b>	<b>2383665</b>	<b>133541</b>

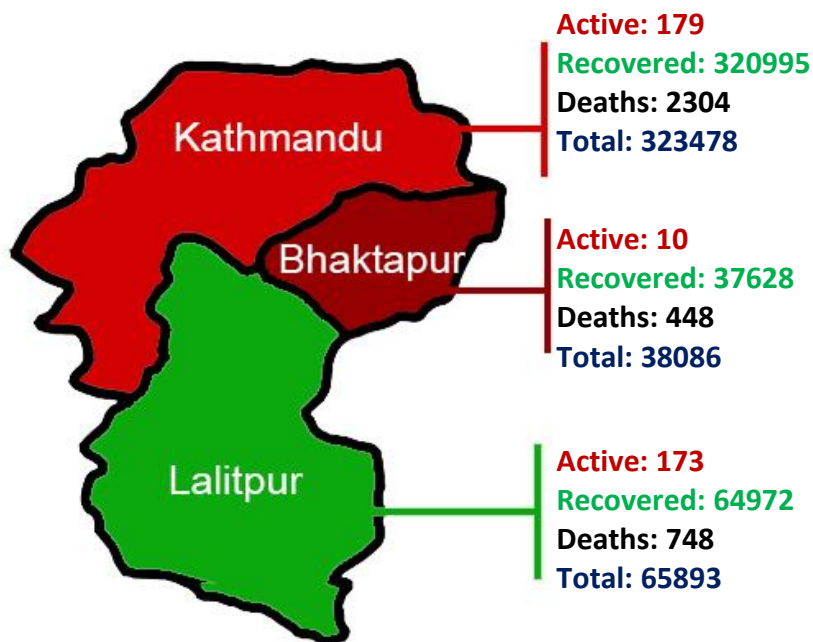
**Age group wise distribution COVID-19 positive cases  
(In last 24 hrs)**



**Age group wise distribution of COVID-19 death cases (Till today)**



# COVID-19 Cases in Kathmandu Valley



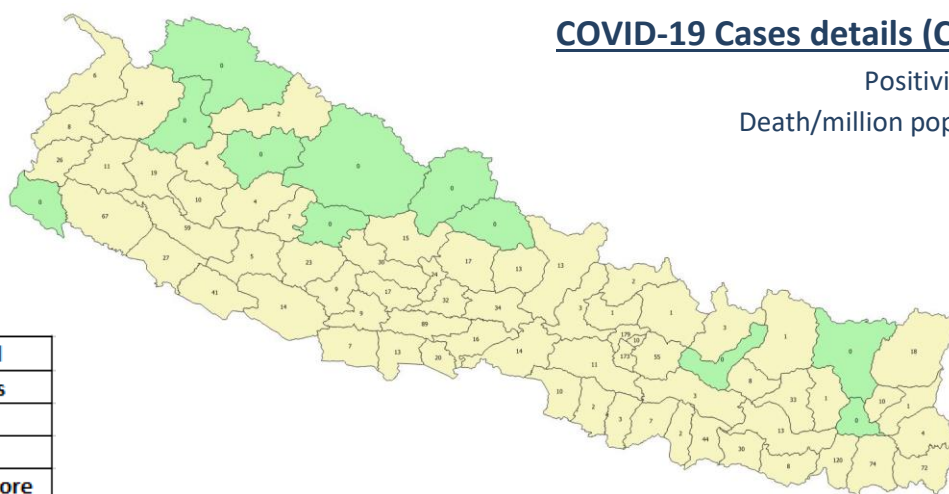
## District wise distribution of COVID-19 active cases\*

Criteria/ Provinces	1	Madhesh	Bagmati	Gandaki	Lumbini	Karnali	Sudurpaschim
Districts with more than 500 active cases							
Districts with more than 200 cases							
Districts with zero active cases	Dhankuta, Sankhuwasabha		Ramechhap	Manang, Mustang	Rukum (E)	Jumla, Dolpa, Humla	Kanchanpur, Bajura

## COVID-19 Cases details (Cumulative)

Positivity Rate: 17.7%

Death/million population: 393.4



Legend	
	No cases
	1-199
	200-499
	500 & more

\*Based on permanent address of tests done throughout the country.

**Province-wise distribution of Isolation, I.C.U, Ventilator & Death details (Date:27 Mar 2022)**

Province	Home Isolation	Institutional Isolation	Patient in I.C.U	Patient in ventilators	Death
Province 1	354	1	1	0	1,716
Madhesh	106	0	0	0	785
Bagmati	422	33	18	2	5,168
Gandaki	131	0	0	0	1,425
Lumbini	269	0	0	0	1,864
Karnali	84	7	0	0	484
Sudurpaschim	147	4	4	0	509
<b>Total</b>	<b>1,513</b>	<b>45</b>	<b>23</b>	<b>2</b>	<b>11,951</b>

**Number of people in Isolation, I.C.U & Ventilator in Kathmandu valley**

Hospital	Hospital Capacity				Patients in				Contact Person	Number
	General beds	HDU beds	ICU beds	Ventilators (Used along with ICU beds)	General	HDU	ICU beds	Ventilators (Used along with ICU beds)		
Armed Police Force Hospital, Balambu	25	155	20	12	0	0	0	0	Dr. Pravin Nepal	9851017542
Shree Birendra Hospital, Chhauni	110	100	25	8	0	0	1	0	Col Dr. Moon Thapa	9841876088
Bir Hospital, Maha Baudha	77	95	59	50	3	0	1	0	Dr. Achyut Karki	9841449232
Nepal Police Hospital, Kathmandu	100	100	30	30	0	0	0	0	DIGP Dr. Sundar Haiju	9841225358
Shukraraj Tropical & Infectious Disease Hospital, Teku	26	50	24	22	2	0	0	0	Dr. Bimal Sharma Chalise	9856027905
TUTH Hospital, Maharajgunj	15	108	45	30	0	0	1	0	Mr. Ram Bikram Adhikari	9851189911
Patan Hospital, Lalitpur	223	73	28	13	0	0	0	0	Dr. Ashish Shrestha	9851061846
Civil Service Hospital, Kathmandu	5	35	15	6	0	0	0	0	Dr Bidesh Bista	9841762180
Bhaktapur Hospital, Bhaktapur	22	36	6	6	0	0	1	1	Dr. Sumitra Gautam	9858023047
National Ayurveda Research & Training Center, Kritipur	150	25			0	0			Dr. Jitendra Shrestha	9851176773
Dhulikhel Hospital	0	30	25	10	0	1	1	0	Dr.Ramesh Makaju Shrestha	9801002260
<b>Total</b>	<b>753</b>	<b>807</b>	<b>277</b>	<b>187</b>	<b>5</b>	<b>1</b>	<b>5</b>	<b>1</b>		

Source: Province and concerned hospitals, 27 Mar 2022, 14:00Hrs

Note: In order to coordinate with the hospitals within the Kathmandu valley for availability of isolation beds, ICUs, ventilators and ambulances, all are requested to contact the hotline "1133" of the Ministry or above-mentioned contact details.

## RT-PCR Tests done in different laboratories

#	Laboratory	Province	Cumulative Tests	In 24 hours	
				Tests	Positive
1	B. P. Koirala Institute of Health Sciences	1	123877	0	0
2	Koshi Hospital, Biratnagar		89524	0	0
3	Mechi Hospital, Jhapa		83287	7	0
4	Provincial Public Health LaboratoryBiratnagar		100405	0	0
5	Nobel Medical College Teaching Hospital,Biratnagar		94247	0	0
6	Neuro COVID hospital, Biratnagar		27544	28	0
7	Birat Medical College		20556	0	0
8	B-sure Path Lab and Diagnostic Center,		27799	0	0
9	Dhankuta Hospital		4765	0	0
<b>Total</b>			<b>572004</b>	<b>35</b>	<b>0</b>
10	Gajendra Narayan Singh Hospital, Rajbiraj, Saptari	Madhesh	28512	0	0
11	Provincial Public Health Laboratory, Janakpur		67458	34	0
12	Narayani Hospital, Birgunj		63577	0	0
13	Gaur Hospital PCR Laboratory		12404	0	0
14	Siraha Hospital		7248	0	0
15	Jaleswor Hospital		3625	0	0
16	Kalaiya Hospital		6718	0	0
17	Malangawa Hospital		5248	0	0
	Others (n=2)*		2381	0	0
<b>Total</b>			<b>197171</b>	<b>34</b>	<b>0</b>
18	National Public Health Laboratory, Teku	Bagmati	345223	10	0
19	Shukraraj Tropical and Infectious Disease Hospital		92621	0	0
20	Bharatpur Hospital COVID-19 Diagnostic Lab		83091	0	0
21	Provincial Public Health Laboratory, Dhulikhel		53420	23	2
22	Dhulikhel Hospital, Dhulikhel		63388	0	0
23	Patan Hospital, Lalitpur		80716	0	0
24	NAMS, Bir Hospital, Kathmandu		87986	105	2
25	Tribhuvan University Teaching Hospital (TUTH)		102812	29	0
26	Nepal Police Hospital Laboratory, Kathmandu		34468	0	0
27	Shree Birendra Hospital, Chhauni		89773	0	0
28	Nepal APF Hospital, Balambu, Kathmandu		37261	0	0
29	Star Hospital Laboratory, Sanepa		312565	210	3
30	Nepal Korea Friendship Municipality Hospital		36562	0	0
31	Central Diagnostic Lab and Research Center		172436	209	0
32	BIDH Lab, Lalitpur		182720	0	0
33	KMC Hospital, Kathmandu		126885	0	0
34	HAMS Hospital, Kathmandu		199284	522	0
35	B & B Hospital, Lalitpur		68797	93	0
36	Nepal Mediciti Hospital, Lalitpur		50385	148	0
37	Chitwan Medical College, Bharatpur		70689	0	0
38	Paropakar Maternity and Women's Hospital		11222	0	0
39	Decode Genomics & Research Center, Kathmandu		84992	0	0
40	Intrepid Diagnostic Center Pvt. Ltd., Kathmandu		40919	0	0
41	Kritipur Municipality-TU Biotech Corona Lab		30414	33	0
42	B.P.Koirala Memorial Cancer Hospital Laboratory, Chitwan		44467	0	0
43	NMC Molecular and Clinical Genetic Lab, Jorpati		31947	16	0
44	Trishuli Hospital		22983	0	0
45	Alfa Heath Care and Diagnostic Centre,New Baneshwor#		112767	0	0
46	Modern Diagnostic Center Nepal Pvt. Ltd		91467	143	4
47	Manmohan Memorial Teaching Hospital		39406	11	0

#	Laboratory	Province	Cumulative Tests	In 24 hours	
				Tests	Positive
48	The Leprosy Mission Nepal Anandaban Hospital, Lele, Lalitpur	Bagmati	5340	0	0
49	Kantipur Hospital, Tinkune		91857	0	0
50	Alka Hospital		30580	0	0
51	Bhaktapur Hospital Lab		24808	0	0
52	Siddhi Poly Path#		51630	331	0
53	KGDH Teaching Hospital and Research Centre		46710	80	0
54	Janamaitri Hospital, kathmandu		10489	0	0
55	Civil Service Hospital		60533	0	0
56	Hetauda Hospital, Hetauda		23300	0	0
57	Crystal Diagnostic Pvt Ltd.		198488	364	0
58	Sahid Gangalal Hospital		11166	0	0
59	Charikot Hospital		4178	0	0
60	Grande Hospital		23006	61	0
61	Sumeru Hospital		83008	0	0
62	Mahendra Narayan Nidhi Memorial Hospital		38979	671	1
63	Nepal Cancer Hospital		4096	0	0
64	Global Hospital, Lalitpur		20400	282	0
65	Green City Hospital , Dhapasi-8 Basundhara, Kathmandu		12348	0	0
66	National Path Lab, Maharajgunj, Kathmandu*		21619	61	0
67	Nepal Lab House Pvt. Ltd, Pingalasthan-8, Gaushala, Kathmandu		15901	0	0
68	Nagarik Community Teaching Hospital, Madhyapur Thimi, Bhaktapur	6649	0	0	
69	Sumeru City Hospital, Pulchowk, Lalitpur	1088	0	0	
	Others (n=5)*	89845	0	0	
	<b>Total</b>	<b>3677684</b>	<b>3402</b>	<b>12</b>	
70	Pokhara Academy of Health Science, Pokhara	Gandaki	31652	0	0
71	Provincial Public Health Laboratory, Pokhara		176392	89	0
72	Life Care Lab, Pokhara		63589	73	2
73	Madhyabindu Hospital		12585	0	0
74	Dhaulagiri Hospital, Baglung		18463	0	0
75	Vyas COVID - 19 PCR Laboratory, Tanahu		1276	0	0
	<b>Total</b>	<b>303957</b>	<b>162</b>	<b>2</b>	
76	Provincial Public Health Laboratory, Rupandehi	Lumbini	47636	0	0
77	Bheri Hospital, Nepalgunj, Banke		83169	0	0
78	Lumbini Provincial Hospital		76440	47	0
79	National Path Lab & Research Center Pvt. Ltd.		100619	50	1
80	Rapti Academy of Health Science, Dang		42321	0	0
81	Bageswari Diagnostic and Polyclinic Center (P.) Ltd		20806	11	0
82	Nepalgunj Medical College, Kohalpur, Banke		27207	27	0
83	Universal College of Medical Sciences		17827	0	0
84	Lumbini Medical College and Teaching Hospital		10119	11	0
	Others (n=3)*	19814	0	0	
	<b>Total</b>	<b>445958</b>	<b>146</b>	<b>1</b>	
85	Surkhet Provincial Hospital, Surkhet	Karnali	72586	0	0
86	Karnali Academy of Health Science, Jumla		34516	0	0
	Others(n=2)*		21806	0	0
	<b>Total</b>	<b>128908</b>	<b>0</b>	<b>0</b>	
87	Dadeldhura Hospital Laboratory, Dadeldhura	Sudurpashim	29735	1	0
88	Seti Provincial Hospital, Dhangadi		127581	0	0
89	Mahakali Hospital		7762	0	0
90	Kamalbazar Municipality PCR lab		8084	0	0
	Others(n=3)*		30509	0	0
	<b>Total</b>	<b>203671</b>	<b>1</b>	<b>0</b>	
	<b>Grand Total</b>	<b>5529353</b>	<b>3780</b>	<b>15</b>	

<b>Number of RT-PCR Testing Laboratories</b>	<b>105</b>	Public	<b>59</b>	Private	<b>46</b>
<b>Total Sample Tested</b>	<b>5529353</b>	Public	<b>2785752</b>	Private	<b>2743601</b>





**Government of Nepal**  
**Ministry of Health and Population**

List of government hospitals operating COVID-19 care units  
(as of 6 August 2021)

<b>S.N.</b>	<b>Name of the health institution</b>	<b>Province</b>
1	B.P. Koirala Institute of Health Sciences, Dharan	1
2	Koshi Hospital, Biratnagar	1
3	Mechi Hospital, Jhapa	1
4	Sankhuwasabha Hospital	1
5	Ilam Hospital	1
6	Udaypur Hospital	1
7	Inaruwa Hospital	1
8	Panchthar Hospital	1
9	Taplejung Hospital	1
10	Tehrathum Hospital	1
11	Okhaldhunga Hospital	1
12	Khotang Hospital	1
13	Bhojpur Hospital	1
14	Solukhumbu Hospital	1
15	Provincial Hospital, Janakpur	Madhesh
16	Gajendra Narayan Singh, Rajbiraj	Madhesh
17	Narayani Hospital, Birgunj	Madhesh
18	Siraha Hospital	Madhesh
19	Jaleswar Hospital	Madhesh
20	Kalaiya Hospital	Madhesh
21	Gaur Hospital	Madhesh
22	Malangwa Hospital	Madhesh
23	Armed Police Force, Balambu	Bagmati
24	Shree Birendra Hospital	Bagmati
25	Bir Hospital	Bagmati
26	National Trauma Center	Bagmati
27	Nepal Police Hospital	Bagmati
28	STIDH, Teku	Bagmati
29	TUTH, Maharajgunj	Bagmati
30	PAHS, Lalitpur	Bagmati
31	Civil Service Hospital	Bagmati
32	Bhaktapur Hospital COVID Treatment Center	Bagmati
33	Paropkar Maternity and Women's Hospital	Bagmati
34	Kanti Children's Hospital, Maharajgunj	Bagmati
35	Manmohan Cardiothoracic Vascular and Transplant Center	Bagmati

<b>S.N.</b>	<b>Name of the health institution</b>	<b>Province</b>
36	National Ayurveda Research and Training Center (NARTC)	Bagmati
37	Sahid Gangalal Hospital	Bagmati
38	Bharatpur Hospital	Bagmati
39	B.P. Koirala Memorial Cancer Hospital	Bagmati
40	Dhading Hospital	Bagmati
41	Sindhuli Hospital	Bagmati
42	Trishuli Hospital	Bagmati
43	Hetauda Hospital	Bagmati
44	Pokhara Academy of Health Sciences	Gandaki
45	Infectious Disease Hospital, Kaski	Gandaki
46	Dhaulagiri Zonal Hospital, Baglung	Gandaki
47	Madhyabindu Hospital	Gandaki
48	Beni Hospital, Myagdi	Gandaki
49	Damauli Hospital, Tanahun	Gandaki
50	Lumbini Provincial Hospital/Dhago Karkhana	Lumbini
51	Bhim Hospital	Lumbini
52	Bheri Hospital	Lumbini
53	Beljhundi Corona Special Hospital	Lumbini
54	Lumbini Provincial Hospital	Lumbini
55	Rapti Academy of Health Sciences	Lumbini
56	Kapilvastu Hospital	Lumbini
57	Nepalgunj Army Hospital	Lumbini
58	Surkhet Provincial Hospital, Surkhet	Karnali
59	Karnali Academy of Health Sciences	Karnali
60	Chaurjahari Hospital	Karnali
61	District Hospital, Mugu	Karnali
62	Humla district	Karnali
63	District Hospital, Kalikot	Karnali
64	District Hospital, Dailekh	Karnali
65	Jajarkot Hospital	Karnali
66	Rukum west district	Karnali
67	Salyan district	Karnali
68	Dolpa Hospital	Karnali
69	Seti Provincial Hospital, Dhangadhi	Sudurpaschim
70	Mahakali Hospital	Sudurpaschim
71	Tikapur Hospital	Sudurpaschim
72	Dadeldhura Hospital	Sudurpaschim
73	Darchula Hospital	Sudurpaschim
74	Batadi District Hospital	Sudurpaschim
75	Bajhang Hospital	Sudurpaschim
76	Achham District Hospital	Sudurpaschim
77	Doti District Hospital	Sudurpaschim
78	Bajura District Hospital	Sudurpaschim

This list will be updated based on the criteria, requesting to send hospital name in e-mail address of this unit at [heocmohp@gmail.com](mailto:heocmohp@gmail.com) if we have missed it.

## Global COVID-19 Statistics

**481,270,392**

Total Cases

**59,734,372**

**(12.4%)**

Active Cases

**6,146,027**

**(1.3%)**

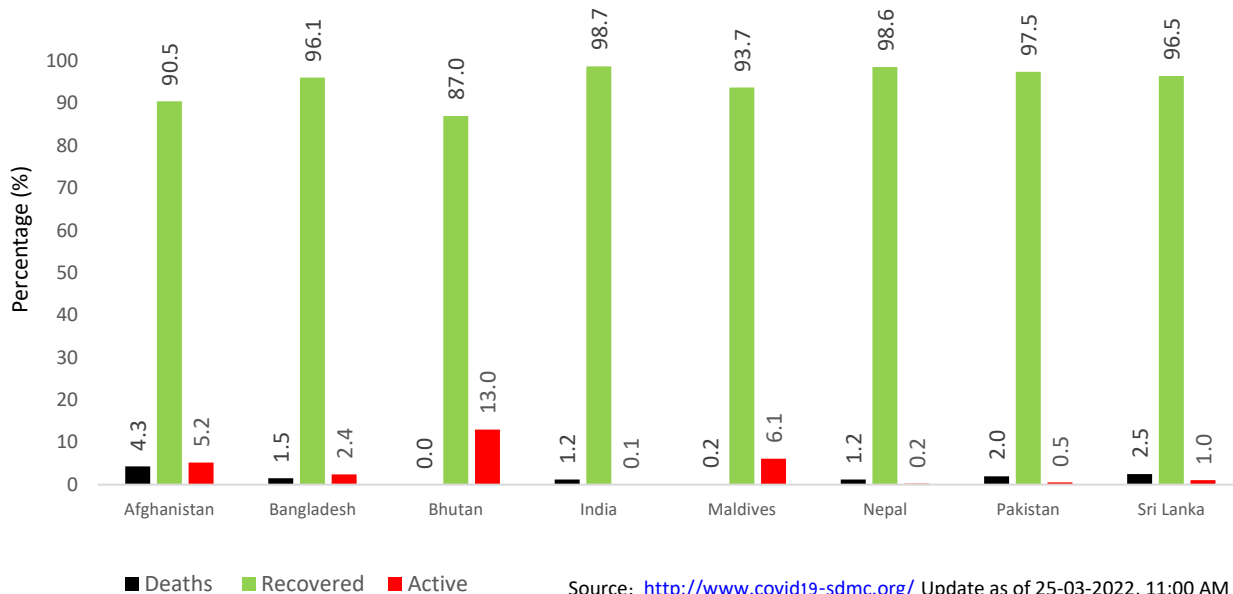
Deaths

**415,389,993**

**(86.3%)**

Recovered

### COVID-19 cases in the SAARC Member States



## Information and Communication

Two Call Centers 1115 (from 6 am to 10 pm) and 1133 (24 hours) have been operationalized since 30th Falgun, 2076 (13 March 2020) to provide counselling service regarding COVID-19 prevention and treatment. People are requested to call these Call Centers for any queries related to COVID-19.

Total number of service users: **398**

People with symptoms of COVID-19 are requested to contact the hotline **1133** or mobile number **9851255839, 9851255837** for inquiries.

**Additional Information:** Please click [here](#) for all the Standards and Technical Guidelines regarding COVID-19

COVID-19 Hotline Service	1133 (24 hours)   1115 (6 AM to 10 PM)
Web Portal	<a href="https://covid19.mohp.gov.np/">https://covid19.mohp.gov.np/</a>   <a href="https://heoc.mohp.gov.np/">https://heoc.mohp.gov.np</a>   <a href="https://portal.edcd.gov.np/">https://portal.edcd.gov.np/</a>
Official Viber Community	Search "MoHP Nepal COVID-19" on Viber to join the community
Social Media	<a href="fb.com/mohpnep">fb.com/mohpnep</a>   <a href="fb.com/HEOCMoHP">fb.com/HEOCMoHP</a>   <a href="fb.com/edcdnepal">fb.com/edcdnepal</a>
Mobile Application	Search "Hamro Swasthya" on Google Play Store and Apple Store